

PRAIRIE HEIGHTS

ADDITION TO CITY OF STURGIS

Scale one inch to 160 ft.

Description

A subdivision of a part of the West 1/2 of the N.W. 1/4 of Section No. 12, T. 8 S., R. 10 W., situated in St. Joseph County, State of Michigan, and bounded as follows: Beginning at the corner of Sections 1, 2, 11 and 12, thence East 1250.2 ft., thence South 165 ft., thence West 166.7 ft., thence South 462 ft., thence East 165.43 ft., thence South 2023 1/2 ft., thence West 566.3 ft., thence North 1297.25 ft., thence West 346 1/2 ft., thence North 528 ft., thence West 330 ft., thence North 825 ft. to place of beginning.

I hereby certify that the plat hereon delineated is a correct one and that permanent monuments have been planted at points marked thus (O) as shown thereon, at all angles in the boundaries of the land platted and at all intersections of Avenues, Streets and Alleys. The exact location of each monument is accompanied by a distinguishing number in red: The monument at 1 is a printed stone, at 2 and 6 stones + 4 and at all other numbered points the monuments are gas pipe stakes.

Samuel S. Reed, Engineer.

State of Michigan
County of St. Joseph

We W. H. VanBuren, Register of Deeds and Samuel S. Reed, Engineer do hereby certify that we have each carefully compared this copy with the original plat of Prairie Heights Addition to Sturgis, and that it is an exact copy thereof and of the whole of such original map or plat.

W. H. VanBuren, Register of Deeds
Samuel S. Reed, Engineer

REGISTER'S OFFICE,

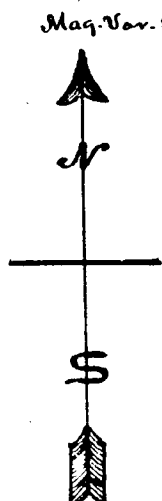
COUNTY OF ST. JOSEPH,

Received for Record, No. 12,
date of April 12, 1906
at 1 o'clock P. M., and Recorded
in Vol. 1 of Plats of Deeds,
on Page 31

W. H. VanBuren
Register of Deeds

I hereby certify that I have examined the records in my office relating to the description of lands in the within instrument and from such examination it appears that the State and County taxes have been fully paid for the five years preceding the date of said instrument.
APR 12 1906
County Treasurer.

See Vol. 4 of Misc. Rec. P. 245



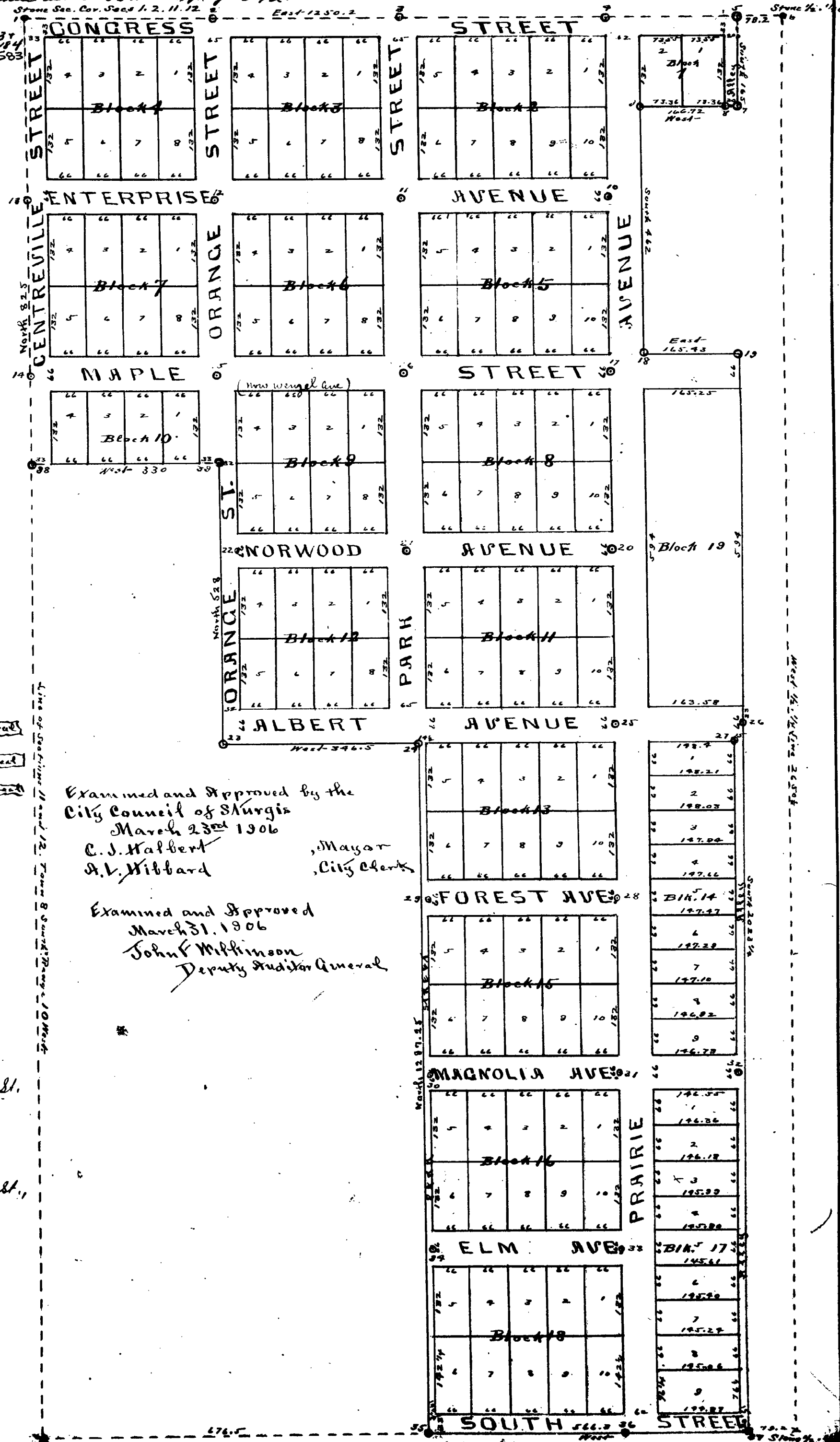
DEDICATION
Know all Men by these Presents, that we, Martin E. Salsbrook, unmarried, and Wm. C. Grobhiser and Lizzie L. Grobhiser, his wife, of Sturgis, Michigan, as proprietors have caused the lands embraced in the annexed plat to be surveyed, laid out and platted, to be known as Prairie Heights Addition to Sturgis; and that the Streets, Avenues and Alleys as shown on said plat are hereby dedicated to the use of the public.

Signed and sealed _____
Signed and sealed in presence of _____
Martin E. Salsbrook
Wm. C. Grobhiser
Lizzie L. Grobhiser
John S. Flanders
H. W. Hagerman

State of Michigan
County of St. Joseph
On this 23 day of March, 1906,
before me a Notary Public, in and for said County, personally came the above named Martin E. Salsbrook, Wm. C. Grobhiser, Lizzie L. Grobhiser, known to me to be the persons who executed the above dedication and acknowledged the same to be their own free act and deed.
H. W. Hagerman, Notary Public,
My term expires June 7, 1909,
L. 24-1922.

See Vol. 6, Misc. Records page 154 for petition to change name of Maple Street to Wenzel Ave. also Park St. to South Park St.
L. T. Popper, Deputy Register.

See Vol. 6, Misc. Records for petition to vacate part of Congress St., page 195.
L. T. Popper, Deputy Register.



Examined and Approved by the
City Council of Sturgis
March 23rd 1906
C. J. Halbert, Mayor
A. L. Hibbard, City Clerk

Examined and Approved
March 31, 1906
John Wilkinson
Deputy Auditor General