

Plat Of
East Lawn Addition

To The
City of Sturgis, St. Joseph County, Michigan

Description of Land Platted

East Lawn Addition to the City of Sturgis, St. Joseph County, Michigan, begins 1068 feet South from the N. W. East corner of Section 12 in Township 8 South and Range 10 West and running thence South 76.28 feet, thence North 89 feet, thence North 787.00 feet, thence East 1322 feet to beginning.

Surveyor's Certificate

I hereby certify that the plat hereon delineated is a correct one, and that permanent monuments, consisting of iron pipe one inch in diameter by six or ten inches in length have been planted at points marked thus (O) as shown thereon, at all angles in the boundaries of the land platted and all intersections of streets.

Geo. A. Engstrom
Surveyor.

Certificate of Municipal Approval

This plat was approved by the Council of the City of Sturgis at a meeting held *the 17th day of September 1916*.

Alfred F. Mowrey Mayor *Gerald E. Smith* Clerk

Certificate of Approval by County Board

This plat was approved on the *14th* day of *September* .. 1916.

John Farrow Judge of Probate,
Edward C. Harwood County Clerk,
Henry C. Parker County Treasurer.

County Treasurer's Certificate Relating to Taxes

Office of County Treasurer, St. Joseph County
I hereby certify that there are no tax liens or taxes held by the State on the lands described above, and that there are no unpaid taxes or liens by individuals on said lands, for the five years preceding the *27th* day of *September* 1916. And that the taxes for said period of five years are paid as shown by the records of this office.

Henry C. Parker County Treasurer

Dedication

Know all men by these presents: That *L. J. Miller*, as proprietor, and *Laura E. Miller*, his wife, have caused the land embraced in the attached plat to be surveyed, laid out, and platted; to be known as East Lawn Addition to the City of Sturgis, St. Joseph County, Michigan, and that the streets as shown on said plat are hereby dedicated to the use of the public.

Signed and sealed in the presence of

Yarnor R. Miller *Joyce W. Miller* (L.B.)
Ray H. Hyman *Laura E. Miller* (L.B.)

STATE OF MICHIGAN
County of St. Joseph

On this *27th* day of *August* 1916, before me a Notary Public for said County, personally appeared *L. J. Miller* and *Laura E. Miller*, his wife, known to me to be the persons who executed the above dedication and acknowledged the same to be their free act and deed.

Ray H. Hyman
Notary Public, St. Joseph County, Michigan

My Commission Expires *April 13, 1920*.

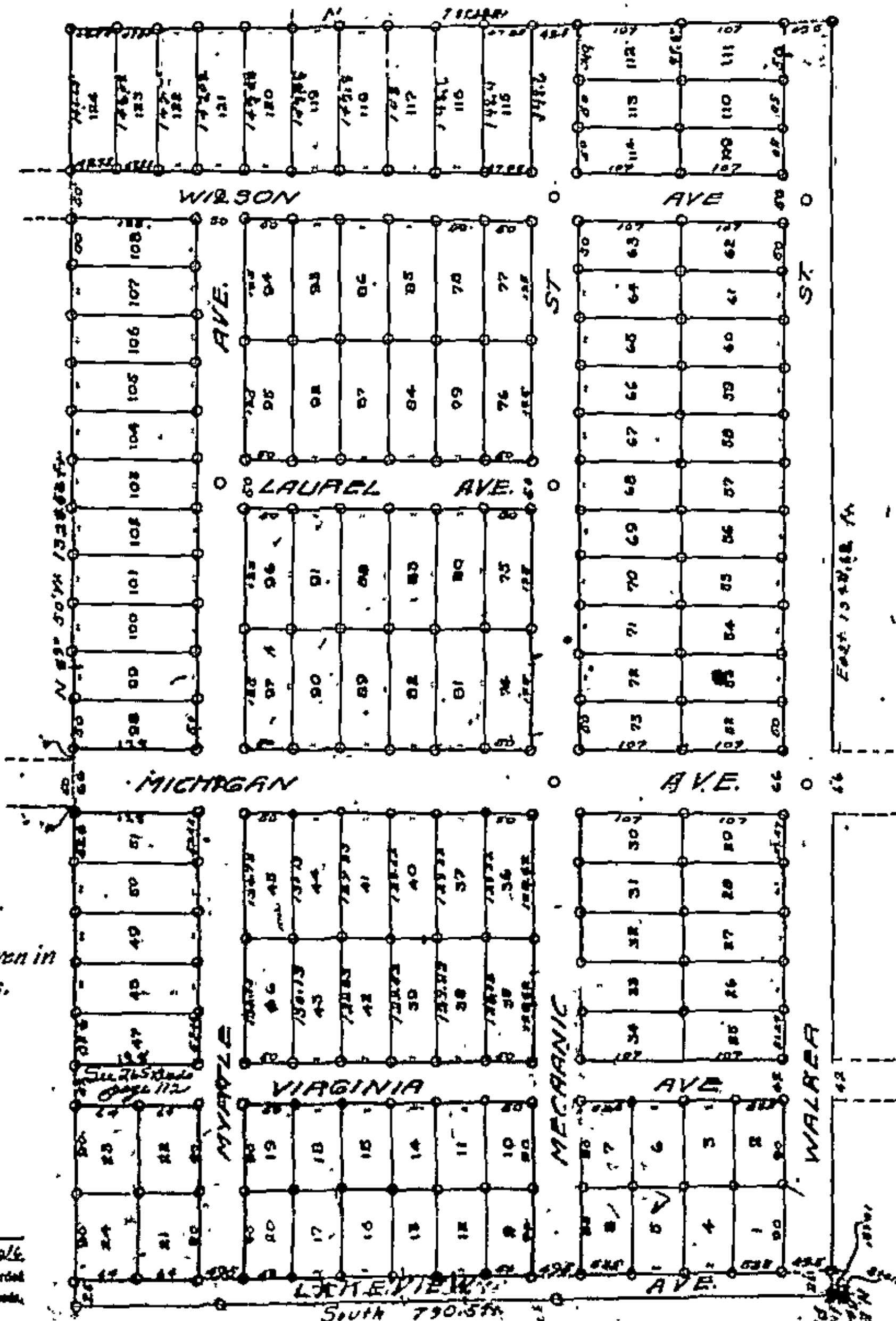
see Resolution of Board 265 Duda Page 112

Scale 100 ft = 1 in.

Dimensions given in feet and decimals.

REGISTER'S OFFICE
Received for Record, this *26th* day of *September*, A.D. 1916, at *St. Joseph*, Mich., and recorded in Vol. *1* of Plats, at Page *79*.
Edna Conner
Register of Deeds.

Examined and Approved
Sept 25-1916
Geo. C. Harwood
Deputy Auditor General



6219