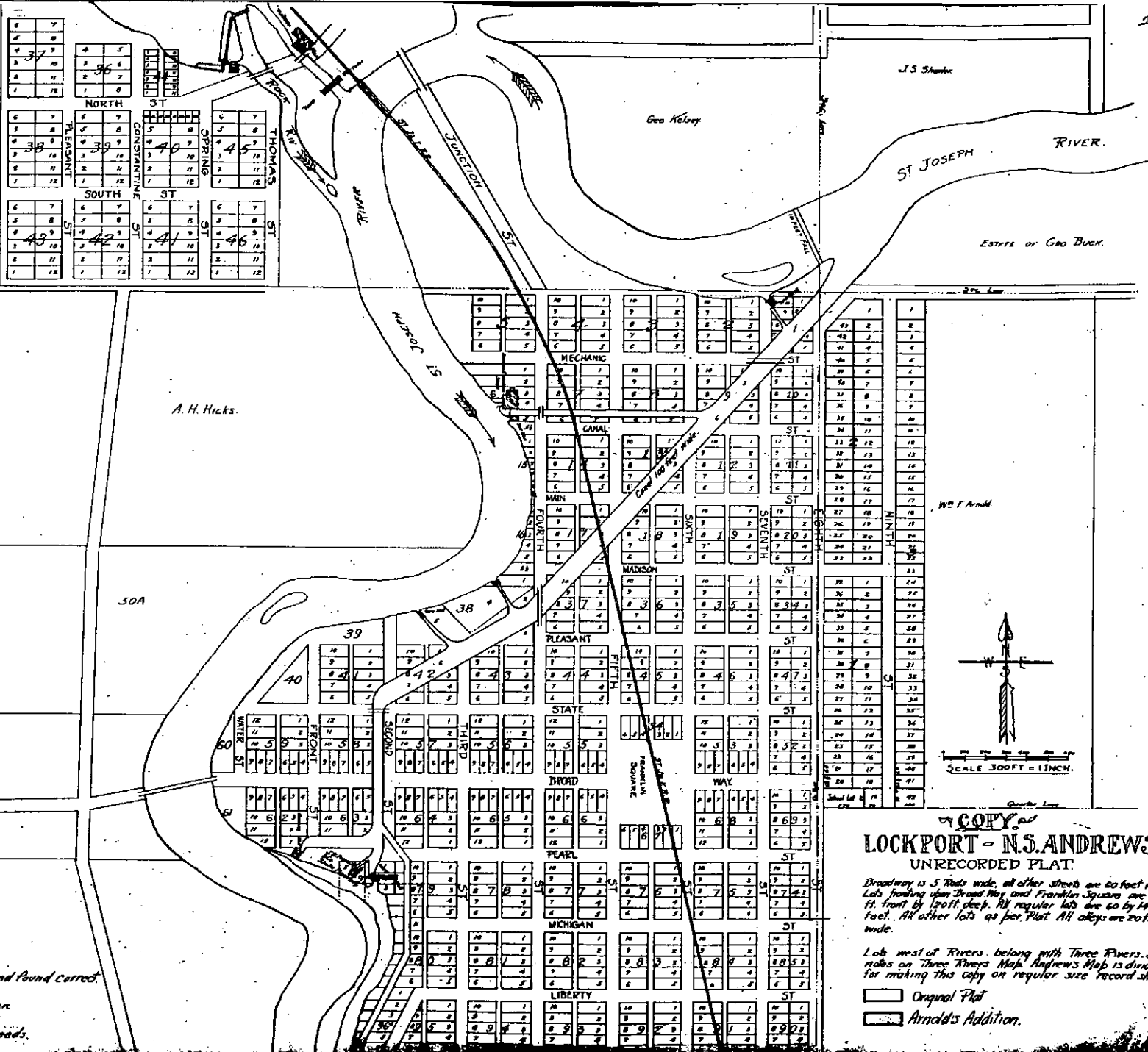


R. Lamb 30A.

Jos<sup>ts</sup> Myers 50A.

20



Jos<sup>ts</sup> B. Millard

A. H. Hicks.

Borden, Hicks.

Schall 40A.

Jos<sup>ts</sup> B. Millard.

This Copy was compared with the original Map, Jan. 22, 1925, and found correct.

Richard F. Reed  
William T. O'Ryan  
Roy B. Doods.

**A COPY of**  
**LOCKPORT - N.S. ANDREWS'**  
**UNRECORDED PLAT.**

Broadway is 5 Rods wide, all other streets are 60 feet wide. Lots fronting upon Broad Way and Franklin Squares are 40 ft. front by 120 ft. deep. All regular lots are 60 by 140 feet. All other lots as per Plat. All alleys are 20 ft. wide.

Lot west of River, belong with Three Rivers. See notes on Three Rivers Map. Andrews' Map is divided for making this copy on regular size record sheets.

- Original Plat
- Arnold's Addition.