

(Copy.)
"ASSESSORS PLAT NO. 2"

CERTIFICATE OF APPROVAL BY
 COUNTY PLAT BOARD.

This Plat was approved on the
11th day of February 1936.

Edmund Harwood
 Judge of Probate.
John W. Mann
 County Clerk.
John W. Fletcher
 County Treasurer.

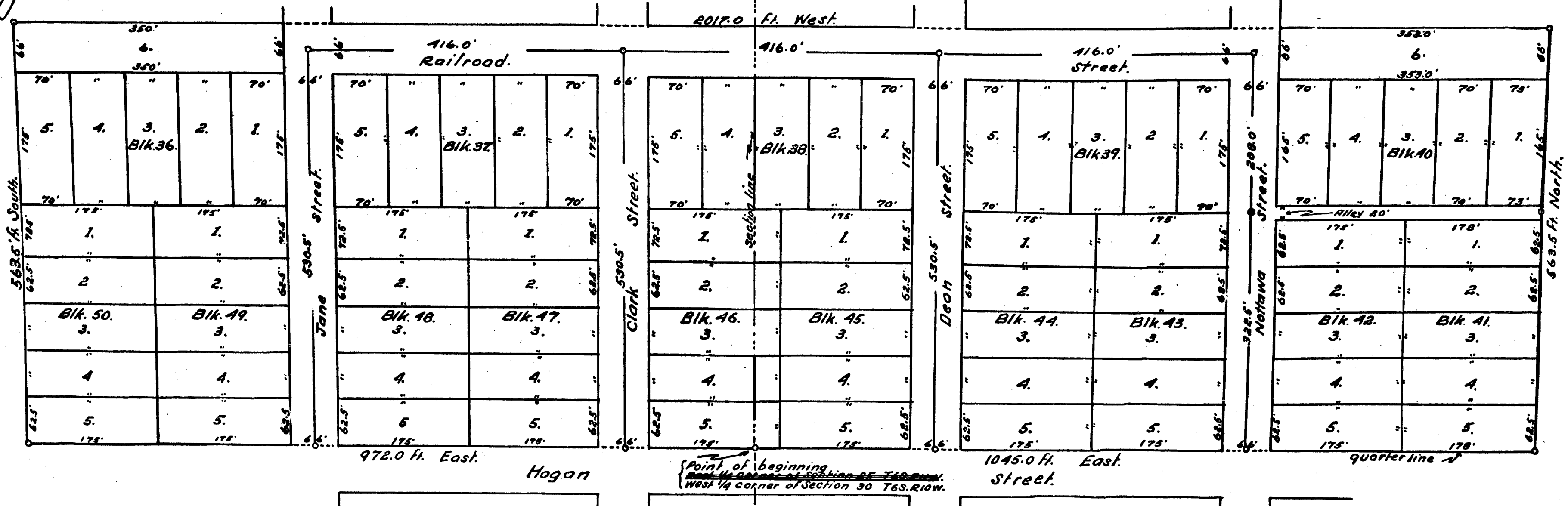
IN THE VILLAGE OF CENTREVILLE
 A PART OF THE NW 1/4 SEC. 30, T6S, R10W AND NE 1/4 SEC. 25, T6S, R11W.
 ST. JOSEPH COUNTY, MICHIGAN.

CERTIFICATE OF MUNICIPAL APPROVAL.

This Plat was approved by the common
 Council of the Village of Centreville at
 a meeting held Sept 5 1935.

D. A. Schall
 Clerk.

Scale one inch = 100'



DEDICATION.
 KNOW ALL MEN BY THESE PRESENTS, that I ARLIE J. PITTS, Assessor
 for the Village of Centreville St. Joseph County Michigan, by virtue of
 authority in me vested by section 51, Act 172 of 1929 having been duly
 authorized by the Village Council have caused the land described
 in the annexed Plat to be surveyed, laid out and platted to be known
 as "Assessors Plat #2" in the Village of Centreville St. Joseph County
 Michigan, and that the streets and Alleys as shown on said plat
 are now being used for such purposes.

Witnesses: *Leon C. Cutler*
P. M. Parkby

Archie J. Pitts
 Assessor for the Village of Centreville.

STATE OF MICHIGAN } s.s.
 County of St. Joseph }

On this 11th day of February 1936, before me a Notary
 Public in and for said County personally came the above named
 Assessor for the Village of Centreville known to me to be the person who
 executed the above dedication and acknowledged the same to be his
 free act and deed as such Assessor.

My commission expires April 22, 1938

Charles P. Chester
 Notary Public in and for St. Joseph County.
 Examined and Approved
John W. Mann
 Deputy Auditor General
 4/23/36
John W. Mann
 Deputy Auditor General
 4/23/36

DESCRIPTION OF LAND PLATTED.
 The land embraced in the annexed plat of "Assessors Plat #2" in the
 Village of Centreville St. Joseph County Michigan is described as
 follows: - Beginning at the ~~East 1/4 corner of Section 30, T6S, R10W~~
 the West 1/4 corner of section 30 T6S, R10W. the boundary runs thence East
 1045.0 ft., thence North 563.5 ft., thence West 2017.0 ft., thence South
 563.5 ft., thence East 972.0 ft. to the point of beginning, ^{being a part of the NW 1/4 Sec. 30, T6S, R10W, and NE 1/4 Sec. 25, T6S, R11W.}
 The above description embraces all of what was known as Langley's
 South Addition.
 All dimensions are given in feet and decimals thereof.

SURVEYORS' CERTIFICATE.
 I hereby certify that the plat hereon delineated is a correct one, and
 that permanent metal monuments of not less than one inch in
 diameter and fifteen inches in length set in a concrete base
 of at least four inches in diameter and fifteen inches in depth, have
 been placed at all points marked thus "o" as thereon shown, at
 all angles in the boundaries of the land platted, at all the inter-
 sections of streets, or of streets and Alleys, and at the intersections
 of streets and Alleys with the boundaries of the plat as shown on
 said plat.

COPIE
 Register's Office
Charles P. Chester
 St. Joseph County, Mich.
 Plat of Assessors Plat No. 2

was returned this 28th day of
April, A. D. 1936 at 12 O'Clock
P. M. in Liber 2 of Plata
 in Page 59

Benjamin S. Magee
 Register of Deeds

I HEREBY CERTIFY THAT THIS COPY IS
 A TRUE COPY OF THE MAP OR PLAT
 FORWARDED TO THE REGISTER OF DEEDS
 FOR RECORD.
John W. Mann
 DEPUTY AUDITOR GENERAL
 4/23/36

377

26526