

See Building Lot Restrictions recorded in Liber 314 of Deeds, page 634
Liber 323 of Deeds, page 256

HIGHLAND MANOR

A SUBDIVISION SITUATED IN THE SOUTHWEST 1/4 OF SECTION 14 AND THE NORTHWEST 1/4 OF SECTION 23,
TOWN 7 SOUTH, RANGE 9 WEST, VILLAGE OF BURR OAK, ST. JOSEPH COUNTY,
MICHIGAN.

TAX CERTIFICATE

OFFICE OF COUNTY TREASURER, ST. JOSEPH COUNTY
I HEREBY CERTIFY THAT THERE ARE NO TAX LIENS OR TITLES HELD BY THE STATE ON THE LAND DESCRIBED
HEREON, AND THAT THERE ARE NO TAX LIENS OR TITLES HELD BY INDIVIDUALS ON THE SAID LANDS FOR
THE FIVE YEARS PRECEDING THE 1st DAY OF September, 1962, AND THAT THE TAXES FOR SAID
PERIOD OF FIVE YEARS ARE FULLY PAID AS SHOWN BY THE RECORDS OF THIS OFFICE. THIS CERTIFICATE
DOES NOT APPLY TO TAXES, IF ANY, NOW IN THE PROCESS OF COLLECTION BY TOWNSHIP, VILLAGE, OR
CITY COLLECTING OFFICERS.

Richard K. Olin
RICHARD K. OLIN, COUNTY TREASURER

DEDICATION

KNOW ALL MEN BY THESE PRESENTS, THAT WE, T. JOHN REED AND
MAXINE L. REED, HUSBAND AND WIFE, AS PROPRIETORS, HAVE
CAUSED THE LAND EMBRACED IN THE ANNEXED PLAT TO BE
SURVEYED, LAID OUT, AND PLATTED, TO BE KNOWN AS HIGHLAND
MANOR, A SUBDIVISION SITUATED IN THE SOUTHWEST 1/4 OF SECTION
14 AND THE NORTHWEST 1/4 OF SECTION 23, TOWN 7 SOUTH, RANGE
9 WEST, VILLAGE OF BURR OAK, ST. JOSEPH COUNTY, MICHIGAN,
AND THAT THE STREETS AND ALLEYS AS SHOWN ON SAID PLATE ARE
HEREBY DEDICATED TO THE USE OF THE PUBLIC.
LOTS 18 THROUGH 29, INCLUSIVE, RUN TO THE WATERS EDGE. THE
VILLAGE OF BURR OAK HAS AN EASEMENT OVER THE 100 FEET ADJACENT
TO THE RIVER CENTERLINE FOR PURPOSES OF MAINTENANCE AND CLEAN-
OUT.

T. John Reed *Maxine L. Reed*
T. JOHN REED MAXINE L. REED
Elma L. Bordner *John B. Bordner*
ELMA L. BORDNER, WITNESS JOHN B. BORDNER, WITNESS

STATE OF MICHIGAN
COUNTY OF ST. JOSEPH SS

ON THIS 27th DAY OF August, 1962, BEFORE ME,
A NOTARY PUBLIC IN AND FOR SAID COUNTY, PERSONALLY
CAME THE ABOVE NAMED T. JOHN REED AND MAXINE L.
REED, HUSBAND AND WIFE, KNOWN TO ME TO BE THE
PERSONS WHO EXECUTED THE ABOVE DEDICATION, AND
ACKNOWLEDGED THE SAME TO BE THEIR FREE ACT
AND DEED.

John B. Bordner
JOHN B. BORDNER, NOTARY PUBLIC,
ST. JOSEPH COUNTY, MICH.
MY COMMISSION EXPIRES 2-1-1964

CERTIFICATE OF APPROVAL BY COUNTY PLAT BOARD

THIS PLAT WAS APPROVED BY THE ST. JOSEPH COUNTY PLAT BOARD
AT A MEETING HELD September 18th, 1962.

Donna E. Donmyer *Richard K. Olin*
DONNA E. DONMYER, REGISTER OF DEEDS RICHARD K. OLIN, COUNTY TREASURER
John W. Marvin *Ruel N. Beebe*
JOHN W. MARVIN, COUNTY CLERK RUEL N. BEEBE, DRAIN COMMISSIONER

DESCRIPTION

HIGHLAND MANOR, A SUBDIVISION SITUATED IN THE SOUTHWEST 1/4
OF SECTION 14 AND THE NORTHWEST 1/4 OF SECTION 23, TOWN 7
SOUTH, RANGE 9 WEST, VILLAGE OF BURR OAK, ST. JOSEPH COUNTY,
MICHIGAN, IS DESCRIBED AS FOLLOWS:
COMMENCING AT THE NORTHWEST CORNER OF SAID SECTION
23 AND RUNNING THENCE SOUTH 00 DEGREES 11 MINUTES
WEST ALONG THE WEST LINE OF SAID SECTION 23 FOR 653.50
FEET, THENCE SOUTH 89 DEGREES 58 MINUTES EAST 663
FEET, THENCE NORTH 24 DEGREES 07 MINUTES 09 SECONDS
EAST 373.87 FEET, THENCE NORTH 35 DEGREES 24
MINUTES 42 SECONDS WEST 532.80 FEET, THENCE
SOUTH 76 DEGREES 27 MINUTES 42 SECONDS WEST 519.36
FEET TO THE POINT OF BEGINNING.
THIS SUBDIVISION CONTAINS 29 NUMBERED LOTS.

CERTIFICATE OF MUNICIPAL APPROVAL

THIS PLAT WAS APPROVED BY THE VILLAGE COUNCIL OF THE
VILLAGE OF BURR OAK AT A MEETING HELD August 27,
1962, AND IS IN COMPLIANCE WITH SECTION 192 AND THAT THE
WIDTH OF LOTS CONFORMS WITH REQUIREMENTS OF SECTION 30,
ACT 172, OF 1929, AS AMENDED.

Carol Ankney
CAROL ANKNEY, VILLAGE CLERK

SURVEYOR'S CERTIFICATE

I HEREBY CERTIFY THAT THE PLAT HEREON DELINEATED IS A
CORRECT ONE AND THAT PERMANENT METAL MONUMENTS
CONSISTING OF BARS NOT LESS THAN ONE-HALF INCH IN
DIAMETER AND 36 INCHES IN LENGTH, ENCASED IN A CONCRETE
CYLINDER AT LEAST 4 INCHES IN DIAMETER AND 36 INCHES
IN DEPTH, HAVE BEEN PLACED AT ALL POINTS MARKED THUS (O)
AS THEREON SHOWN AT ALL ANGLES IN THE BOUNDARY OF THE
LAND PLATTED, AT ALL THE INTERSECTIONS OF STREETS, AND
AT THE INTERSECTIONS OF STREETS WITH THE BOUNDARIES OF THE
PLAT AS SHOWN ON SAID PLAT.

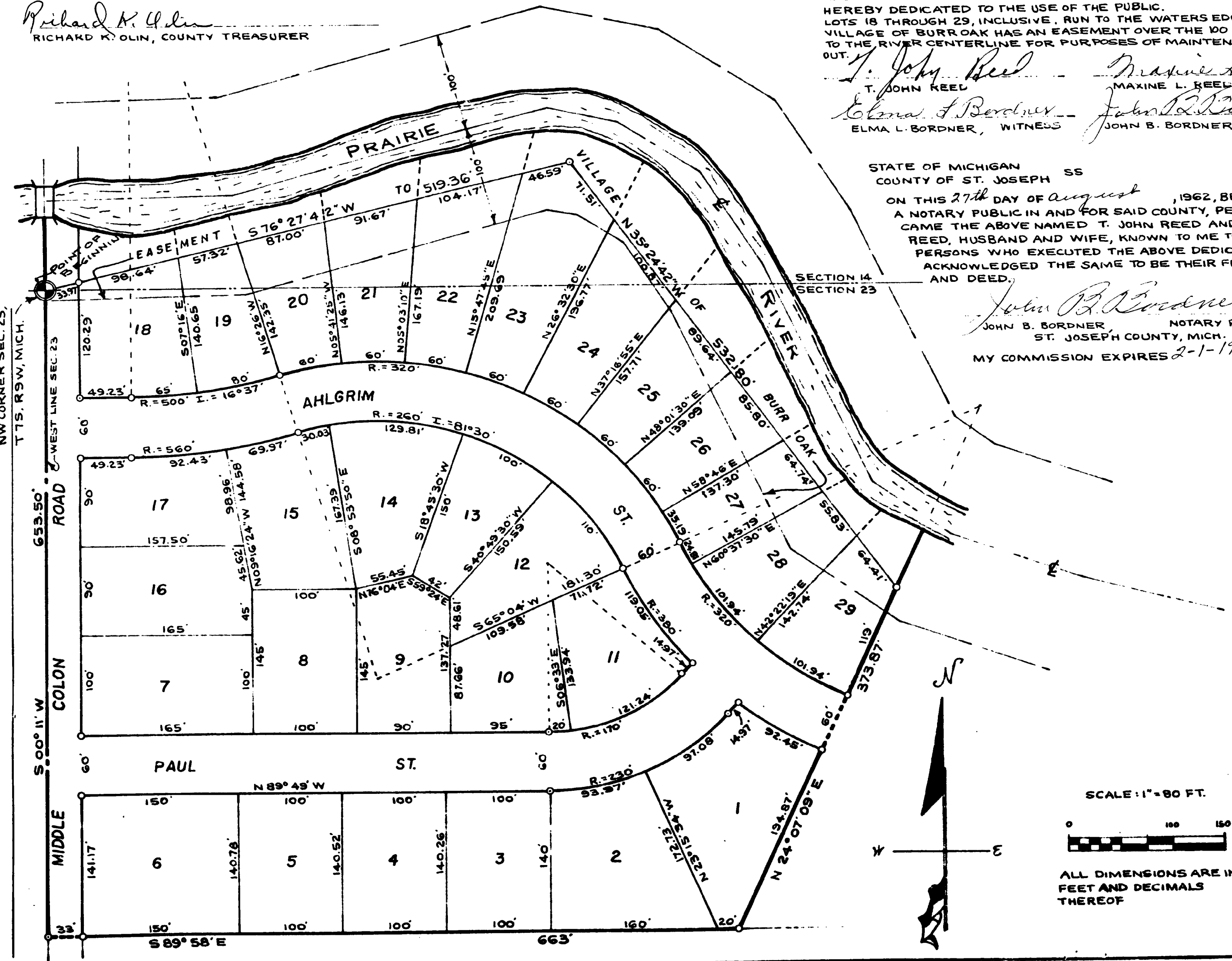
Robert E. Sayers
ROBERT E. SAYERS, REGISTERED LAND SURVEYOR

EXAMINED AND APPROVED

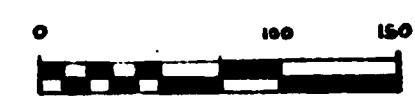
Date Oct 2, 1962

Billie S. Farnum
BILLIE S. FARNUM
AUDITOR GENERAL
Richard E. Lomax
Richard E. Lomax - Plat Examiner

REGISTER'S OFFICE,
COUNTY OF ST. JOSEPH,
STATE OF MICHIGAN
3rd
295
1962



SCALE: 1" = 80 FT.



ALL DIMENSIONS ARE IN
FEET AND DECIMALS
THEREOF