

SUNNY-SIDE PARK

St. Joseph County, Mich.

A Subdivision of a part of the North-west fractional quarter of Section No. Two, Town 8 South Range West, Michigan Mer. To find the place of beginning the boundary of Sunny-Side Park commence at the North-west corner of said Section No. 2 and run thence East on the section line 1426 ft., thence South at 90° with said line 246.3 ft. to a pointed stone, said stone being the place of beginning. (Said place of beginning may also be found by following the lines of an old survey as follows, commence at the North-west corner of said section No. 2, and run East on the section line 548.8 ft. to stone 'd', thence S. 2½° E. 744½ ft. to the center of a Blackwalnut tree 30 inches in diameter, thence S. 23° E. 131.8 ft. to an iron stake, in the center of a highway, thence S. 24° E. 1830.2 ft. to a pointed stone, thence N. 33½° E. 89.2 ft. to a pointed stone which is the place of beginning.) The boundary of Sunny-Side Park runs thence S. 24° E. 188.1 ft., thence N. 42° E. 197.35 ft., thence N. 24½° E. 406½ ft., thence N. 24° W. 149.82 ft. and thence S. 33½° W. 576.16 ft. to place of beginning.

I, Samuel S. Reed, the engineer who made the survey of Sunny-Side Park do hereby certify that the plat hereon delineated is correct and in accordance with the notes of the Survey, and that permanent monuments have been planted in the ground at all angles in the boundary lines, said points being indicated on the plat by small circles, thus (o) at points A, B, C, D and E. The monuments at A, D and E, are pointed stones; the monuments at B and C are 2 inch gas pipes 24 long. The monuments at A and B also determine the line of Knapp Street; the division lines between all lots are at 90° with Knapp St. and said lots all extend to and front on Klingers Lake. *Samuel S. Reed Engineer*

Dedication: Know all Men by these Presents, that George Crossett Harvey as proprietor and Julia Simons Harvey his wife, having had the lands shown on this map, surveyed, laid out and platted, to be known as Sunny-Side Park, do hereby dedicate all Alleys, Streets as shown on this plat to the use of the public.

Witnessed } *Wm. Bonbright* } Signed } *George Crossett Harvey* } Seal }
Julia Simons Harvey } Seal }

State of Michigan }
 County of St. Joseph }
 On this 20th day of May 1910 before me, a Notary Public, in and for said County, personally came George Crossett Harvey and Julia Simons Harvey, known to me to be the persons who signed the foregoing dedication and each of whom acknowledged the same to be their free act and deed.

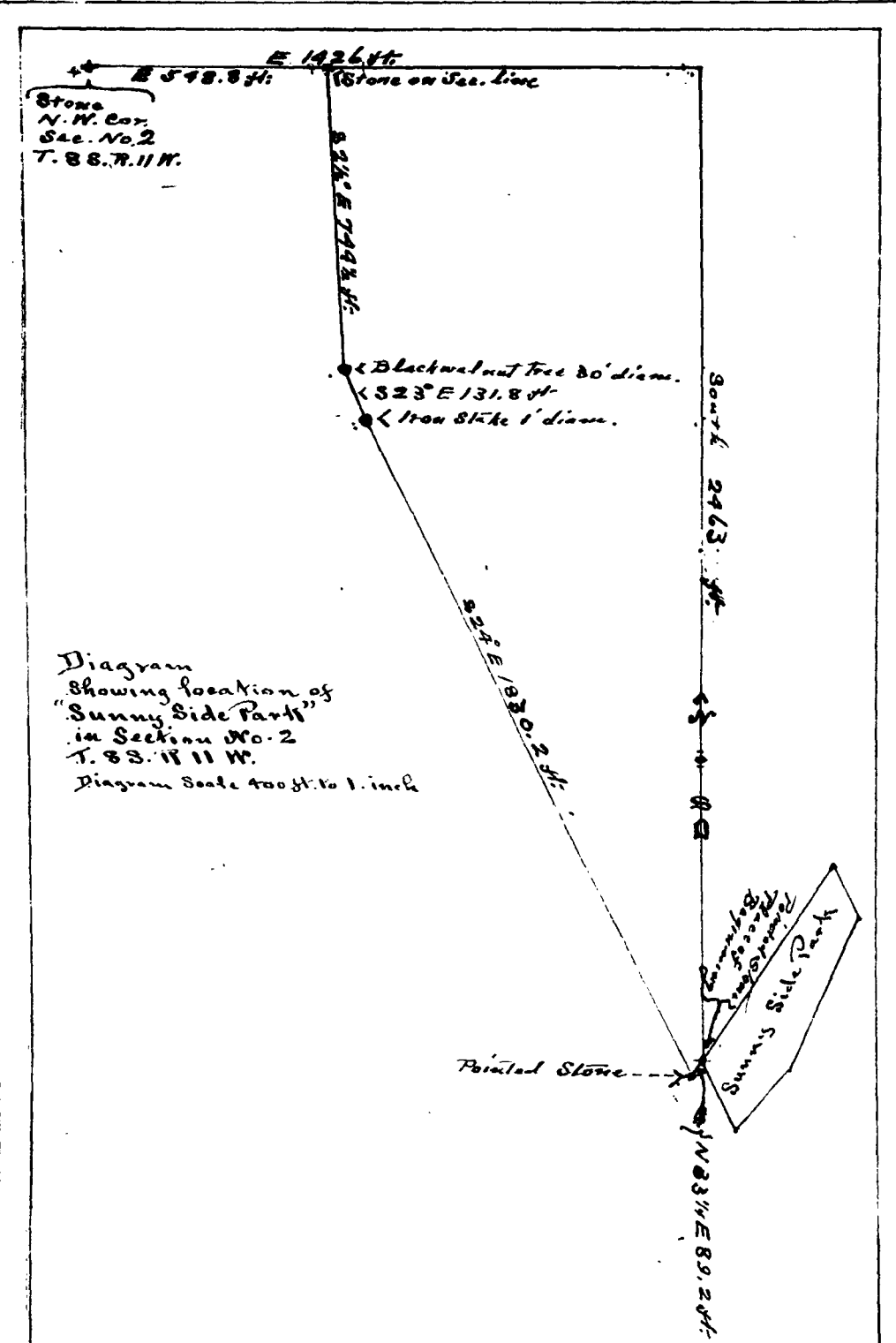
Wm. Bonbright Notary Public.
 My Commission Expires June 24, 1918

Approved by Township Board
 White Pigeon Township
 June 30, 1910
Richard Frank Supervisor
James E. Hagedorn Justice
Freeman Ware Clerk

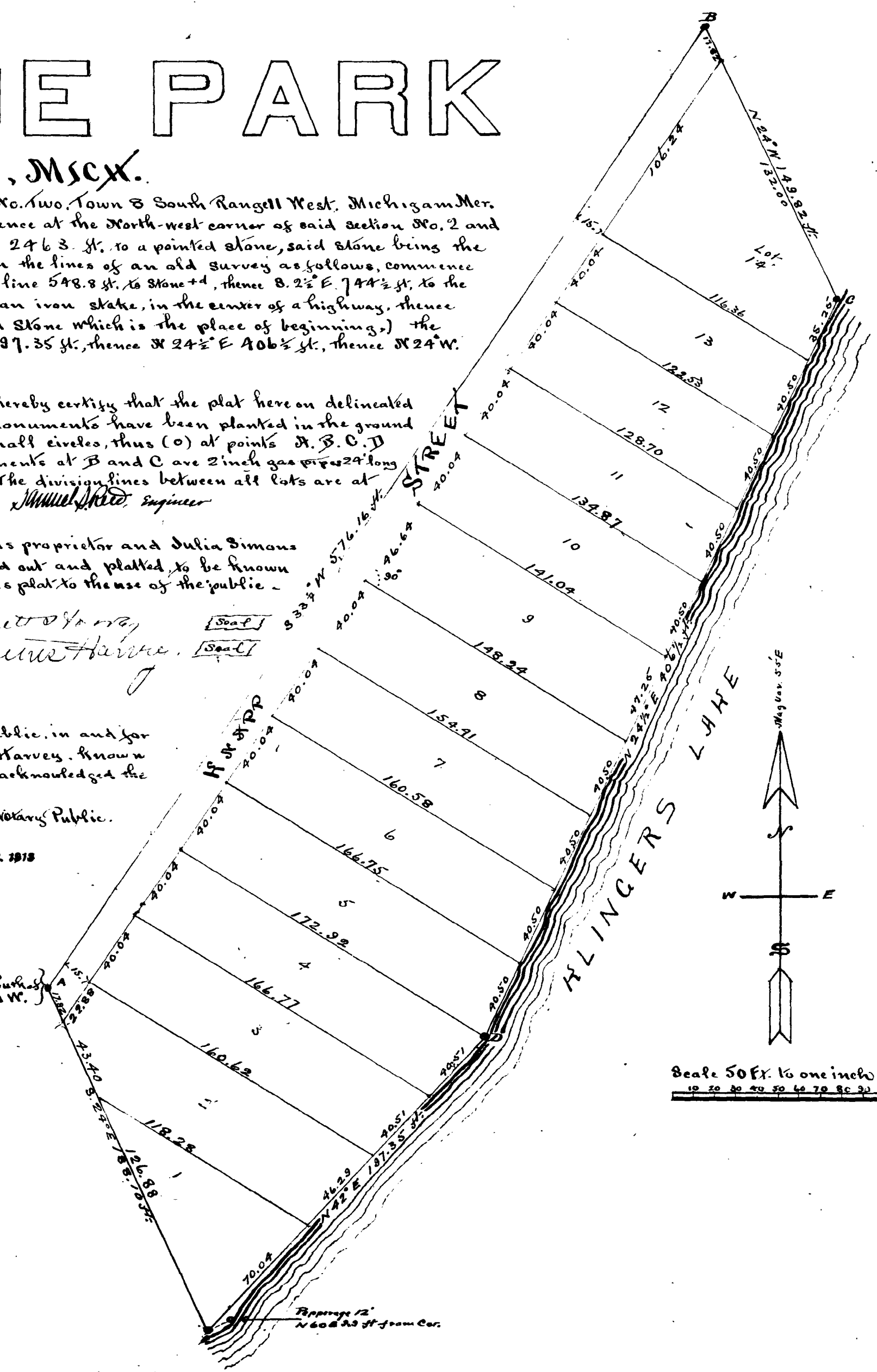
Place of Beginning
 1426 ft. East S. 24 1/2 ft. South of
 N.W. corner Sec. 2, T. 8 S. R. 11 W.

I hereby certify that I have examined the records in my office relating to the description of lands in the within instrument and from such examination it appears that all State and County taxes have been fully paid for the five years preceding the date of said instrument.
 Centerville, Mich. July 22, 1910
Wm. Bonbright
 County Treasurer.

REGISTER'S OFFICE,
 COUNTY OF ST. JOSEPH
 Received for Record, this 22nd day of August A.D. 1910 at 8 o'clock A.M., and Recorded in Vol. 149 of Deeds, Plats 99 Page 49
Chas. P. Sabory
 Register of Deeds



Examined and Approved
 AUG 18 1910
Geo. L. Hansen
 Deputy Auditor General.



Scale 50 ft. to one inch
 10 20 30 40 50 60 70 80 90 100 ft.