

62
29 Aug 1944

PARRISH BEACH

A SUBDIVISION OF PART OF THE E 1/2 OF THE NW FRAC. 1/4 OF FRAC. SECTION 19, T8S, R11W
WHITE PIGEON TOWNSHIP, ST. JOSEPH COUNTY, MICHIGAN

SCALE 1" = 100'

All dimensions are given in feet and decimals thereof

DEDICATION

KNOW ALL MEN BY THESE PRESENTS, That we Charles E. Preston, as proprietor, and Belle Preston, his wife, have caused the land embraced in the annexed plat to be surveyed laid out and platted, to be known as "Parrish Beach, a subdivision of part of the E 1/2 of the NW frac. 1/4 of frac. Section 19, T8S, R11W, White Pigeon Township, St. Joseph County, Michigan, and that the streets as shown on said plat are hereby dedicated to the use of those persons who shall from time to time be the owners or authorized occupants of the lots in said subdivision.

Signed and Sealed in Presence of

Ada Murray
Ada Murray
S. Edward Coats
S. Edward Coats

Charles E. Preston (L.S.)
Charles E. Preston
Belle Preston (L.S.)
Belle Preston

STATE OF MICHIGAN }
County of St. Joseph }

ACKNOWLEDGMENT

On this 2nd day of August 1944, before me, a Notary Public, in and for said County, personally came the above named Charles E. Preston, and Belle Preston, his wife, known to me to be the persons who executed the above dedication, and acknowledged the same to be their free act and deed.

S. Edward Coats
S. Edward Coats
Notary Public, St. Joseph County, Mich.

My commission expires November 6, 1944

DESCRIPTION OF LAND PLATTED

The land embraced in the annexed plat of "Parrish Beach, a subdivision of part of the E fractional 1/2 of the NW fractional 1/4 of Section 19, T8S, R11W, White Pigeon Township, St. Joseph County, Michigan," is described as follows: Beginning at a point on the south line of fractional Section 19, T8S, R11W, and 46.76 feet west of the SE corner of said fractional Section, thence N58°26' E 300.3 feet thence N53°20' E 200 feet thence N33°30' E 250 feet, thence N36°10' E 250 feet, thence N40°42' E 300 feet, thence N49°07' E 250 feet, thence N60°21' E 571 feet, thence S15°37' E 181.41 feet, thence S60°21' W 509.70 feet, thence S49°07' W 278.74 feet, thence S40°42' W 280.08 feet, thence S36°10' W 238.94 feet, thence S1°30' W 276.67 feet, thence S53°20' W 238.61 feet, thence S58°26' W 101.68 feet, thence West 336.2 feet to point of beginning.

SURVEYORS CERTIFICATE

I hereby certify that the plat hereon delineated is a correct one and that permanent metal monuments consisting of bars not less than one half inch in diameter and 48 inches in length or shorter bars of not less than one half inch in diameter lapped over each other of least 6 inches with an over all length of not less than 48 inches encased in a concrete cylinder of least 4 inches in diameter and 48 inches in depth have been placed at points marked thus "o" as thereon shown at all angles in the boundaries of the land platted, at all the intersections of streets, intersections of alleys or of streets and alleys, and at the intersections of streets and alleys with the boundaries of the plat as shown on said plat.

Howard A. Murray
Registered Land Surveyor Howard A. Murray

COUNTY TREASURER'S CERTIFICATE RELATING TO TAXES

(Sec. 135, Act 206, 1893 as amended Sec. 4134, C.L. 1915) Office of County Treasurer, St. Joseph County.
I hereby certify that there are no tax liens or taxes held by the State on the lands described herein and that there are no tax liens or taxes held by individuals on said lands for the five years preceeding the 1st day of July 1944, and that the taxes for said period of five years are paid as shown by the Records of this office.

Eva M. Brumbaugh
Eva M. Brumbaugh County Treasurer

CERTIFICATE OF APPROVAL BY BOARD OF COUNTY ROAD COMMISSIONERS

This plat has been examined and was approved on the 6 day of July 1944, by the St. Joseph County Board of Road Commissioners.

Roy G. Stuart CHAIRMAN
Arthur L. Hibbard MEMBER
Ralph F. Grosley MEMBER

CERTIFICATE OF MUNICIPAL APPROVAL

This plat was approved by the Township Board of the Township of White Pigeon at a meeting held July 29th 1944.

S. Edward Coats
S. Edward Coats Clerk.

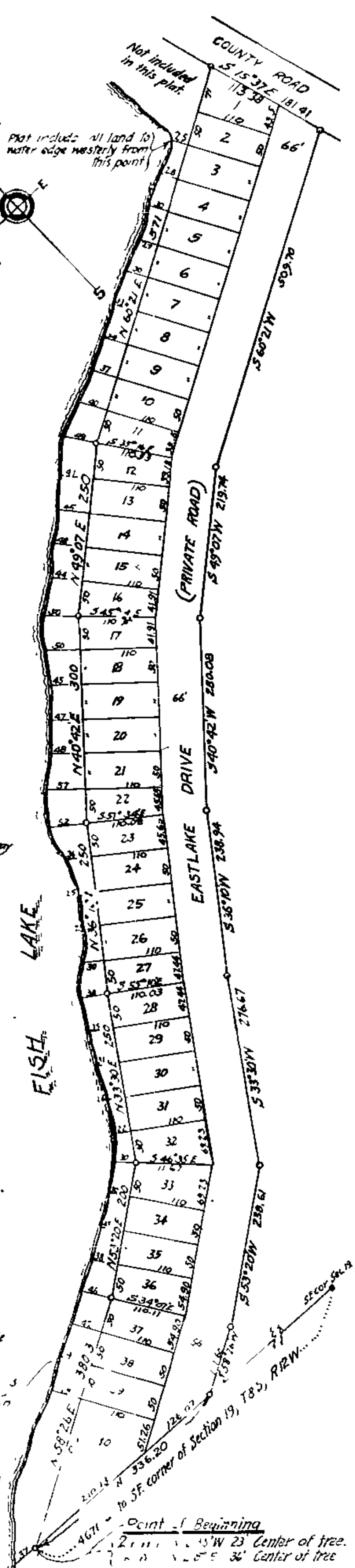
CERTIFICATE OF APPROVAL BY COUNTY BOARD

This plat was approved on the 4th day of Aug 1944.

Harrington E. Galkins Register of Deeds
John W. Marvin County Clerk
Eva M. Brumbaugh County Treasurer

CERTIFICATE AS TO COUNTY ROADS
We hereby certify that said plat appears to include land located on a county road.

Eva M. Brumbaugh County Plat Books
Examined and approved 1944
Roy G. Stuart
Arthur L. Hibbard
Ralph F. Grosley County Road Commission



REGISTERED OFFICE
COUNTY OF ST. JOSEPH
STATE OF MICHIGAN
Notary Public
My commission expires
to be recorded
to be recorded

Examined and Approved
Mayne J. Purdy
Mayne J. Purdy County Clerk

Point of Beginning
211.15' W 23' Center of tree.
110.5' E 36' Center of tree.