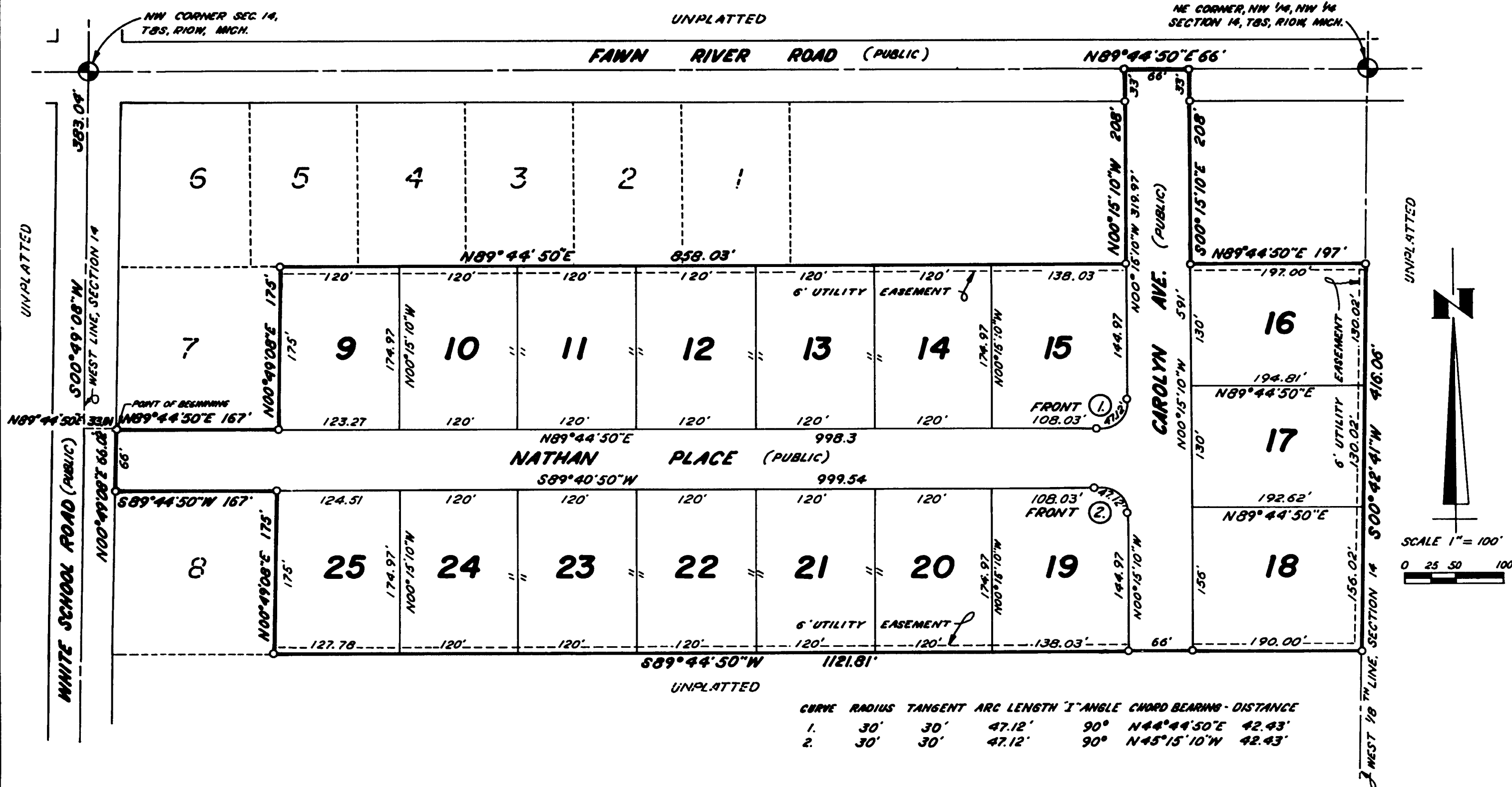


ANDERSON SUBDIVISION NO. 2

A SUBDIVISION SITUATED IN THE NW 1/4 OF THE NW 1/4 OF SECTION 14, TOWN 8 SOUTH, RANGE 10 WEST, STURGIS TOWNSHIP, ST. JOSEPH COUNTY, MICHIGAN



COUNTY TREASURER'S CERTIFICATE:
RECORDS IN MY OFFICE SHOW NO UNPAID TAXES OR SPECIAL ASSESSMENTS FOR THE FIVE YEARS PRECEDING MAY 2, 1974 INVOLVING THE LANDS INCLUDED IN THIS PLAT.

Stanley M. Huff
STANLEY M. HUFF, ST. JOSEPH COUNTY TREASURER

COUNTY DRAIN COMMISSIONER'S CERTIFICATE:
APPROVED ON MAY 2, 1974 AS COMPLYING WITH SECTION 192 OF ACT 288, P.A. 1967 AND THE APPLICABLE PUBLISHED RULES AND REGULATIONS OF MY OFFICE IN THE COUNTY OF ST. JOSEPH.

Lloyd F. Cupp
LLOYD F. CUPP, DRAIN COMMISSIONER

CERTIFICATE OF COUNTY ROAD COMMISSIONERS:
APPROVED ON MAY 2, 1974 AS COMPLYING WITH SECTIONS 183 OF ACT 288, P.A. 1967 AND THE APPLICABLE PUBLISHED RULES AND REGULATIONS OF THE BOARD OF ROAD COMMISSIONERS OF ST. JOSEPH COUNTY.

Carl L. Roberts
CARL L. ROBERTS, CHAIRMAN

Frank Shellenbarger
FRANK SHELLENBARGER, MEMBER

D.W. Arney
D.W. ARNEY, MEMBER

CERTIFICATE OF MUNICIPAL APPROVAL:
I CERTIFY THAT THIS PLAT WAS APPROVED BY THE TOWNSHIP BOARD OF THE TOWNSHIP OF STURGIS AT A MEETING HELD MAY 6, 1974 AND WAS REVIEWED AND FOUND TO BE IN COMPLIANCE WITH ACT 288, P.A. 1967. THIS PLAT WAS APPROVED ON JAN. 23, 1974 BY THE ST. JOSEPH COUNTY HEALTH DEPARTMENT.

Christine Feller
CHRISTINE FELLER, CLERK

COUNTY PLAT BOARD CERTIFICATE:
THIS PLAT HAS BEEN REVIEWED AND IS APPROVED BY THE JOSEPH COUNTY PLAT BOARD ON MAY 5TH, 1974 AS BEING IN COMPLIANCE WITH ALL OF THE PROVISIONS OF ACT 288, P.A. 1967 AND THE PLAT BOARD'S APPLICABLE RULES AND REGULATIONS.

Donna E. Donmyer
DONNA E. DONMYER, REGISTER OF DEEDS

Stanley M. Huff
STANLEY M. HUFF, COUNTY TREASURER

Beverly J. Buchanan
BEVERLY J. BUCHANAN, COUNTY CLERK

REGISTER OF DEEDS OFFICE
COUNTY OF ST. JOSEPH
THIS PLAT OF ANDERSON SUBDIVISION NO. 2 WAS RECORDED THIS DAY OF
JUNE 7TH AT 11:30 O'CLOCK A.M. IN LIBER 5 OF PLATS ON PAGE 5

Robert E. Sayers
ROBERT E. SAYERS, WITNESS

Jean L. Sayers
JEAN L. SAYERS, WITNESS

Donna E. Donmyer
DONNA E. DONMYER, REGISTER OF DEEDS

SURVEYOR'S CERTIFICATE:
I, ROBERT E. SAYERS, SURVEYOR, CERTIFY THAT I HAVE SURVEYED, DIVIDED AND MAPPED THE LAND SHOWN ON THIS PLAT, DESCRIBED AS FOLLOWS: ANDERSON SUBDIVISION NO. 2, A SUBDIVISION SITUATED IN THE NW 1/4 OF THE NW 1/4 OF SECTION 14, TOWN 8 SOUTH, RANGE 10 WEST, STURGIS TOWNSHIP, ST. JOSEPH COUNTY, MICHIGAN, IS DESCRIBED AS FOLLOWS: COMMENCING AT THE NW CORNER OF SAID SECTION 14 AND RUNNING THENCE S00°49'08"W ALONG THE WEST LINE OF SAID SECTION 14 383.04 FEET, THENCE N89°44'50"E 330.1 FEET TO THE SW CORNER OF LOT 7 OF ANDERSON SUBDIVISION WHICH IS THE POINT OF BEGINNING OF THIS SUBDIVISION; THE BOUNDARY RUNS THENCE N89°44'50"E 167.00 FEET; THENCE N00°49'08"E 175.00 FEET; THENCE N89°44'50"E 858.03 FEET; THENCE N00°15'10"W 208.00 TO THE NORTH LINE OF SAID SECTION 14; THENCE N89°44'50"E ALONG THE NORTH LINE OF SAID SECTION FOR 68.00 FEET; THENCE S00°15'10"E 208.00 FEET; THENCE N89°44'50"E 197.00 FEET TO THE WEST 1/2-1/4 LINE OF SAID SECTION 14; THENCE S00°42'41"W ALONG SAID 1/2-1/4 LINE 416.06 FEET; THENCE S89°40'50"W 1121.81 FEET; THENCE N00°49'08"E 175.00 FEET TO THE POINT OF BEGINNING OF THIS SUBDIVISION. THIS SUBDIVISION CONTAINS 25 NUMBERED LOTS. THAT SUCH PLAT IS A CORRECT REPRESENTATION OF ALL THE EXTERIOR BOUNDARIES OF THE LAND SURVEYED AND THE SUBDIVISION OF IT. THAT THE REQUIRED MONUMENTS AND LOT MARKERS HAVE BEEN LOCATED IN THE GROUND AS REQUIRED BY SECTION 125 OF THE ACT. THAT THE ACCURACY OF THE SURVEY IS WITHIN THE LIMITS REQUIRED BY SECTION 126 OF THE ACT. THAT THE BEARING SHOWN ON THE PLAT ARE EXPRESSED AS REQUIRED BY SECTION 126 (3) OF THE ACT AND AS EXPLAINED IN THE LEGEND.

May 6, 1974
DATE
Robert E. Sayers
ROBERT E. SAYERS, REGISTERED LAND SURVEYOR #7074
RD. BOX 212, STURGIS, MICHIGAN 49032

PROPRIETOR'S CERTIFICATE:
WE, AS PROPRIETORS, CERTIFY THAT WE HAVE CAUSED THE LAND EMBRACED IN THIS PLAT TO BE SURVEYED, DIVIDED, MAPPED AND DEDICATED AS REPRESENTED ON THIS PLAT AND THAT PORTION OF FAWN RIVER ROAD, NATHAN PLACE AND CAROLYN AVE. WHICH FALL WITHIN THE BOUNDARY OF SAID PLAT ARE FOR THE USE OF THE PUBLIC; THAT THE PUBLIC UTILITY EASEMENTS ARE PRIVATE EASEMENTS AND THAT ALL OTHER EASEMENTS ARE FOR THE USES SHOWN ON THE PLAT.

Emerson L. Anderson
EMERSON L. ANDERSON
814 WHITE SCHOOL ROAD
STURGIS, MICHIGAN 49091

Betty C. Anderson
BETTY C. ANDERSON
814 WHITE SCHOOL ROAD
STURGIS, MICHIGAN 49091

ACKNOWLEDGEMENT:
STATE OF MICHIGAN
COUNTY OF ST. JOSEPH
PERSONALLY CAME BEFORE ME THIS 2nd DAY OF May, 1974 THE ABOVE NAMED EMERSON L. ANDERSON AND BETTY C. ANDERSON, HIS WIFE, TO ME KNOWN TO BE THE PERSONS WHO EXECUTED THE FOREGOING INSTRUMENT AND ACKNOWLEDGED THAT THEY EXECUTED THE SAME AS THEIR FREE ACT AND DEED.

NOTARY PUBLIC, *Jean L. Sayers*, St. Joseph COUNTY, MICHIGAN
JEAN L. SAYERS
MY COMMISSION EXPIRES
May 29, 1976



RESTRICTIONS CERTIFICATE:
THIS PLAT IS SUBJECT TO RESTRICTIONS REQUIRED BY ACT 288, P.A. 1967, AS AMENDED, ON CERTAIN LOTS WITH RESPECT TO THE MICHIGAN DEPARTMENT OF PUBLIC HEALTH WHICH ARE RECORDED IN LIBER 310 OF DEEDS ON PAGES 677 OF RECORDS IN THIS COUNTY.

LEGEND
PLAT BEARINGS WERE ESTABLISHED BY THE WEST LINE OF SECTION 14, T8S, R10W, AS SHOWN ON PLAT OF KEN LARGE SUBDIVISION, RECORDED IN LIBER 4 OF PLATS ON PAGE 89
ALL DIMENSIONS ARE IN FEET. CURVE DIMENSIONS ARE ARC DISTANCES.
4" CONCRETE MONUMENTS ARE AT ALL POINTS MARKED THIS: 0
ALL LOT CORNERS ARE MARKED BY A 1/2" X 1/2" SOLID IRON BAR.

