

# SUPERVISOR'S PLAT NO. 1 OF SHERMAN TOWNSHIP

IN THE NORTHWEST FRACTIONAL QUARTER OF SECTION 9,  
TOWN 7 SOUTH, RANGE 10 WEST, SHERMAN TOWNSHIP,  
ST. JOSEPH COUNTY, MICHIGAN.

## DEDICATION:

Knew all men by these presents, that I, John Wenzel, Supervisor of Sherman Township, St. Joseph County, State of Michigan, by virtue of authority in me vested by Section 51, Act 178 of 1929, having been duly authorized by the Township Board, have caused the land embraced in the annexed plat to be surveyed, laid out and platted, to be known as Supervisor's Plat No. 1 of Sherman Township, in the Northwest Fractional Quarter of Section 9, Town 7 South, Range 10 West, Sherman Township, St. Joseph County, Michigan, and that the courts and existing public road shown on said plat are now being used by the public. Lot 38 extends to water's edge as indicated on plat.

### Witnesses:

Chas. Balk  
Chas. Balk

John Wenzel  
John Wenzel, Supervisor of Sherman Township.

Francis Smith  
Francis Smith

STATE OF MICHIGAN  
COUNTY OF ST. JOSEPH

On this 29 day of April, 1952, before me, a Notary Public in and for said County, personally came the above named John Wenzel, Supervisor of Sherman Township, known to me to be the person who executed the above dedication and acknowledged the same to be his free act and deed as such supervisor.

Leo Winters  
Leo Winters

Notary Public in and for  
St. Joseph County, Michigan.  
My commission expires July 4 1953

## DESCRIPTION OF LAND PLATTED:

The description of Supervisor's Plat No. 1 of Sherman Township, in the Northwest Fractional Quarter of Section 9, Town 7 South, Range 10 West, Sherman Township, St. Joseph County, Michigan, is as follows: Beginning at a point 788.85 feet east and 24.5 feet north of the west Quarter Post of said Section 9 and running thence North 200 feet, thence East 388.3 feet, thence South 85 degrees 29' minutes East 48.41 feet, thence North 45 degrees 55' minutes East 187.0 feet, thence North 25 degrees 3' minutes East 114.92 feet, thence South 2 degrees 11' minutes East 52.5 feet, thence North 34 degrees 23' minutes East 50.2 feet, thence North 7 degrees 40' minutes East 256.0 feet, thence North 30 feet, thence North 2 degrees 25' minutes West 119.93 feet, thence North 69 degrees 55' minutes West 8.0 feet, thence North 3 degrees 18' minutes East 40.0 feet, thence North 69 degrees 55' minutes West 14.0 feet, thence North 3 degrees 18' minutes East 210.0 feet, thence North 6 degrees 10' minutes East 20.08 feet, thence North 3 degrees 18' minutes East 90.0 feet, thence South 69 degrees 55' minutes East 225.0 feet, thence South 3 degrees 18' minutes West 480.0 feet, thence South 3 degrees 45' minutes East 30.16 feet, thence South 14 degrees 46' minutes East 100.0 feet, thence North 69 degrees 18' minutes East 30.28 feet, thence North 72 degrees 47' minutes East 30.0 feet, thence South 41 degrees 11' minutes East 221.64 feet, thence South 67 degrees 44' minutes West 120.55 feet, thence North 17 degrees 15' minutes West 27.8 feet, thence South 72 degrees 47' minutes West 30.0 feet, thence South 67 degrees 6' minutes East 224.95 feet, thence South 26 degrees 1' minute West 59.85 feet, thence South 56 degrees 35' minutes West 48.5 feet, thence South 45 degrees 17' minutes East 32.0 feet, thence South 29 degrees 37' minutes East 32.3 feet, thence South 27 degrees 51' minutes West 30.0 feet, thence South 25 degrees 37' minutes West 171.0 feet, thence South 28 degrees 34' minutes West 104.37 feet, thence West 224.0 feet to Beginning.

## CERTIFICATE OF APPROVAL BY COUNTY ROAD COMMISSION:

This plat has been examined and was approved on the 19<sup>th</sup> day of June, 1952, by the St. Joseph County Board of Road Commissioners.

Ivan Bent  
Ivan Bent, Chairman

Paul L. Ahlgren  
Paul L. Ahlgren, Member

Paul L. Ahlgren  
Paul L. Ahlgren, Member

## CERTIFICATE OF APPROVAL BY COUNTY PLAT BOARD:

This plat was approved on the 20 day of June 1952

Eleanor C. Russell  
Eleanor C. Russell, Register of Deeds

John W. Marvin  
John W. Marvin, County Clerk

Eva M. Brumbaugh  
Eva M. Brumbaugh, County Treasurer

Earl Luce  
Earl Luce, Drain Commissioner

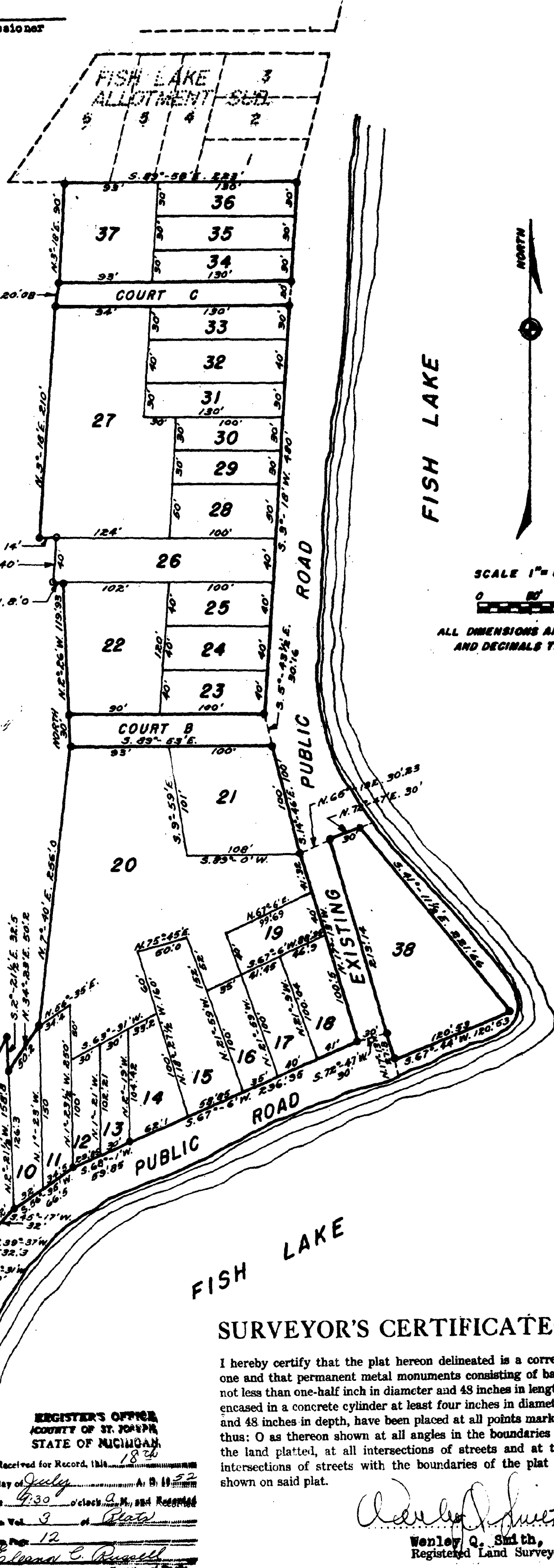
## CERTIFICATE OF MUNICIPAL APPROVAL:

This plat was approved by the Township Board of the Township of Sherman at a meeting held \_\_\_\_\_, 1952.

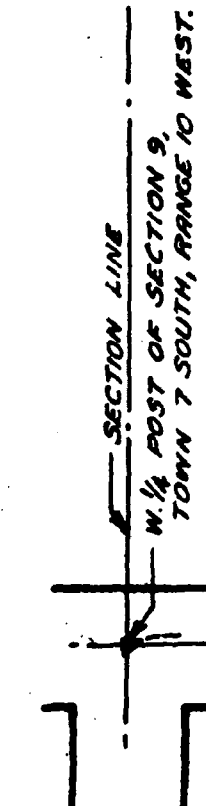
John Fair  
John Fair, Clerk.

Examined and Approved

Wayne Jewell Ford  
Deputy Auditor General  
Wayne Jewell Ford



SCALE 1" = 60'  
ALL DIMENSIONS ARE IN FEET AND DECIMALS THEREOF



## SURVEYOR'S CERTIFICATE:

I hereby certify that the plat hereon delineated is a correct one and that permanent metal monuments consisting of bars not less than one-half inch in diameter and 43 inches in length, encased in a concrete cylinder at least four inches in diameter and 48 inches in depth, have been placed at all points marked thus: O as thereon shown at all angles in the boundaries of the land platted, at all intersections of streets and at the intersections of streets with the boundaries of the plat as shown on said plat.

Wenley Q. Smith  
Wenley Q. Smith, Registered Land Surveyor.

REGISTER'S OFFICE  
COUNTY OF ST. JOSEPH  
STATE OF MICHIGAN  
Received for Record, this \_\_\_\_\_ day of \_\_\_\_\_, 1952, at \_\_\_\_\_ o'clock \_\_\_\_\_ M., and Received in Vol. \_\_\_\_\_ of \_\_\_\_\_

This Plat of Supervisor's Plat No. 1 of Sherman Township, in the Northwest Fractional Quarter of Section 9, Town 7 South, Range 10 West, St. Joseph County, Michigan, is a correct one and that permanent metal monuments consisting of bars not less than one-half inch in diameter and 43 inches in length, encased in a concrete cylinder at least four inches in diameter and 48 inches in depth, have been placed at all points marked thus: O as thereon shown at all angles in the boundaries of the land platted, at all intersections of streets and at the intersections of streets with the boundaries of the plat as shown on said plat.