

EXAMINED AND APPROVED  
APR 5 1955

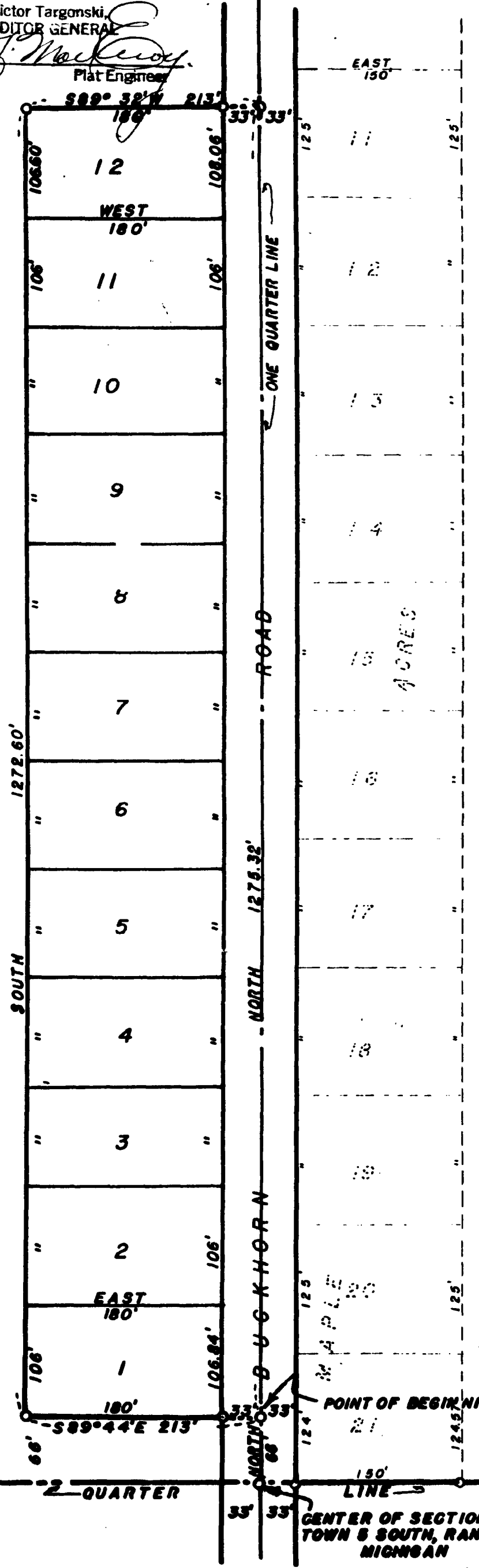
Date  
*Victor Targonski*  
Victor Targonski,  
AUDITOR GENERAL  
By *[Signature]*  
Plat Engineer

# PARK TOWN DRIVE

A SUBDIVISION IN THE EAST HALF OF THE NORTHWEST  
QUARTER OF SECTION 32, TOWN 5 SOUTH, RANGE 11  
WEST, PARK TOWNSHIP, ST. JOSEPH COUNTY, MICHIGAN.

See Restrictions recorded in Liber 275 Deeds p. 245.  
See Amendment to Restrictions recorded in Liber 292 Deeds p. 245  
See Amendment to Restrictions recorded in Liber 302 Deeds p. 358

REGISTRAR'S OFFICE,  
COUNTY OF ST. JOSEPH,  
STATE OF MICHIGAN.  
Received for Record this 14th day of April A.D. 1955 at 9:30 o'clock A.M. in Vol. 3 of Plate on Page 44  
*Richard Olin*  
Acting



### DESCRIPTION

The description of Park Town Drive, a subdivision in the Northwest one quarter of section 32, Town 5 South, Range 11 West, Park Township, St. Joseph County, Michigan, is as follows: Commencing at the center of said section 32 and running thence North on the one quarter line 66 feet to the place of beginning; thence North on the one quarter line 1275.32 feet, thence South 89 degrees 32 minutes West 213 feet, thence South 1272.60 feet, thence South 89 degrees 44 minutes East 213 feet to the place of beginning.



SCALE: 1"=100 FT.  
ALL DIMENSIONS ARE IN FEET AND DECIMALS THEREOF

### DEDICATION

Know all men by these presents that we, John A. Mathews and Shirley R. Mathews, husband and wife, as proprietors, have caused the land embraced in the annexed plat to be surveyed, laid out and platted, to be known as Park Town Drive, a subdivision in section 30, Town 5 South, Range 11 West, Park Township, St. Joseph County, Michigan and that part of Buckhorn Road lying adjacent to said plat is hereby dedicated to the use of the public.

Witnesses:

*[Signature]*  
ROBERT E. SAYERS  
*John A. Mathews*  
John A. Mathews  
*Jean L. Sayers*  
JEAN L. SAYERS  
*Shirley R. Mathews*  
Shirley R. Mathews

STATE OF MICHIGAN SS  
COUNTY OF ST. JOSEPH

On this 30th day of DECEMBER, 1954, before me, a notary public in and for said county, personally appeared John A. Mathews and Shirley R. Mathews, husband and wife, as proprietors, known to me to be the persons who executed the above dedication and acknowledged the same to be their own free act and deed.

*Leonard E. Bullard*  
LEONARD E. BULLARD  
Notary Public, St. Joseph County,  
Michigan  
My commission expires JANUARY 26th, 1958.

### CERTIFICATE OF APPROVAL BY COUNTY ROAD COMMISSION

This plat was approved on the 6th day of January, 1955 by the St. Joseph County Board of Road Commissioners.

*Paul L. Ahlgrim*  
PAUL L. AHLGRIM, Chairman  
*Walter T. Percy*  
WALTER T. PERCY, Member  
*Ivan Gent*  
IVAN GENT, Member

### CERTIFICATE OF APPROVAL BY THE COUNTY PLAT BOARD

This plat was approved on the 21st day of January, 1955.

*Eleanor C. Russell*  
Eleanor C. Russell, Register of Deeds  
*John W. Marvin*  
John W. Marvin, County Clerk  
*Irene Hibbard*  
Irene Hibbard, County Treasurer  
*Richard Olin*  
Richard Olin, Drain Commissioner

### CERTIFICATE OF MUNICIPAL APPROVAL

This plat was approved by the Township Board of the Township of Park at a meeting held on the 7th day of JANUARY, 1955.

*A. L. Peel*  
A. L. PEEL, CLERK

### TAX CERTIFICATE

OFFICE OF THE COUNTY TREASURER, ST. JOSEPH COUNTY  
I hereby certify that there are no tax liens or titles held by the state on the land hereon described, and that there are no tax liens or titles held by individuals on said lands for the five years preceding the day of JANUARY 5, 1955, and that the taxes for said period of five years are fully paid as shown by the records of this office. This certificate does not apply to taxes, if any, now in process of collection by township, city, or village collecting officers.

*Irene Hibbard*  
Irene Hibbard, County Treasurer

### SURVEYOR'S CERTIFICATE

I hereby certify that the plat hereon delineated is a correct one and that permanent metal monuments consisting of bars not less than one half inch in diameter and 48 inches in length, encased in a concrete cylinder at least four inches in diameter and 48 inches in depth have been placed at all points marked thus; O as thereon shown at all angles in the boundaries of the land platted, at all intersections of streets and at all the intersections of streets with the boundaries of the plat as shown on said plat.

*Robert E. Sayers*  
Robert E. Sayers  
Registered Land Surveyor