

# OAKWOOD TERRACE NO. 1

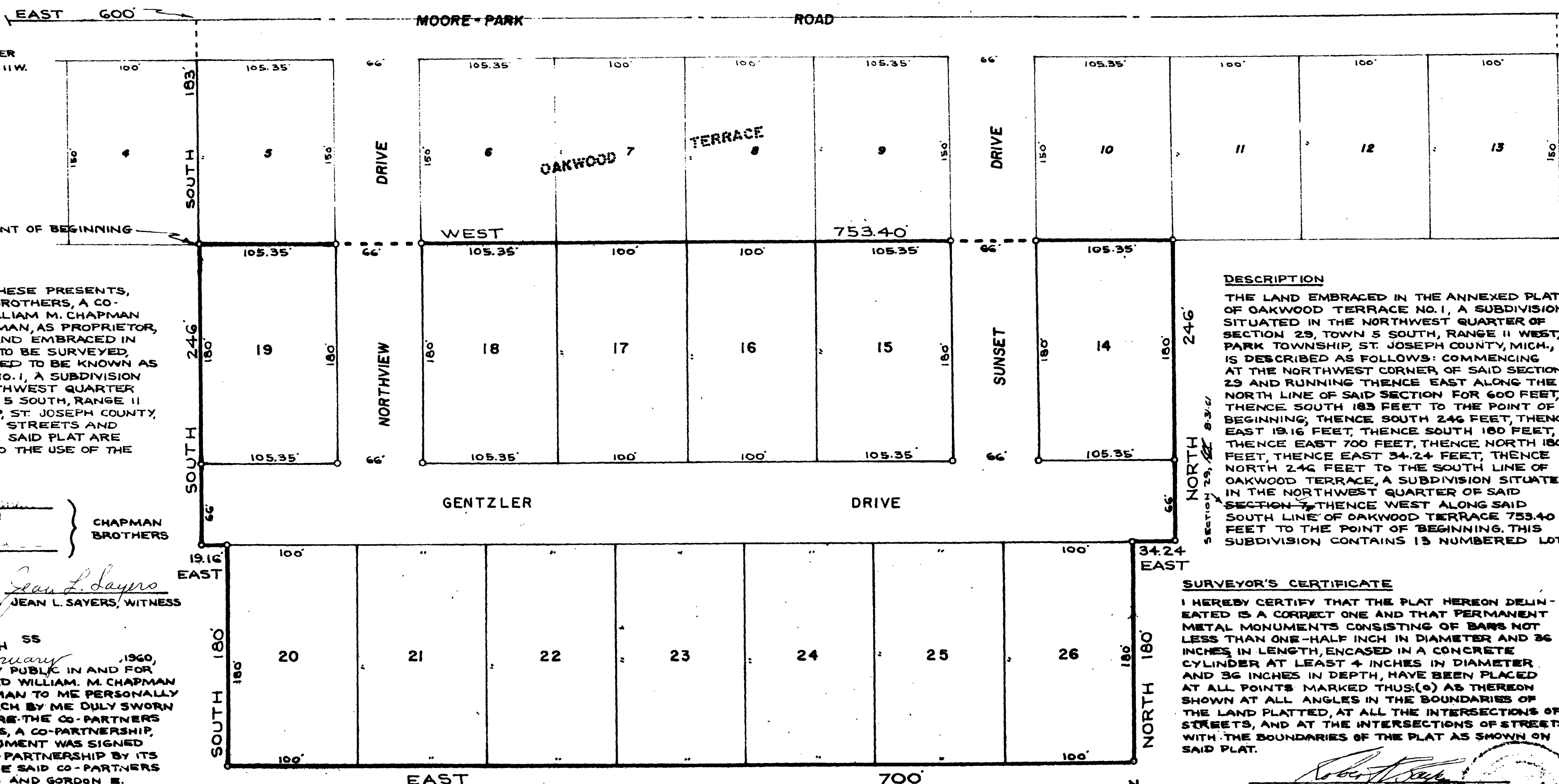
EXAMINED AND APPROVED

Date OCTOBER 14, 1960

*Otis M. Smith*  
OTIS M. SMITH  
AUDITOR GENERAL

By *D. L. MacElroy*  
D. L. MacElroy - Plat Engineer

A SUBDIVISION SITUATED IN THE NORTHWEST QUARTER OF SECTION 29,  
TOWN 5 SOUTH, RANGE II WEST, PARK TOWNSHIP, ST. JOSEPH COUNTY, MICH.



### DEDICATION

KNOW ALL MEN BY THESE PRESENTS, THAT WE, CHAPMAN BROTHERS, A CO-PARTNERSHIP, BY WILLIAM M. CHAPMAN AND GORDON E. CHAPMAN, AS PROPRIETOR, HAVE CAUSED THE LAND EMBRACED IN THE ANNEXED PLAT TO BE SURVEYED, LAID OUT, AND PLATTED TO BE KNOWN AS OAKWOOD TERRACE NO. 1, A SUBDIVISION SITUATED IN THE NORTHWEST QUARTER OF SECTION 29, TOWN 5 SOUTH, RANGE II WEST, PARK TOWNSHIP, ST. JOSEPH COUNTY, MICH., AND THAT THE STREETS AND ALLEYS AS SHOWN ON SAID PLAT ARE HEREBY DEDICATED TO THE USE OF THE PUBLIC.

*William M. Chapman*  
WILLIAM M. CHAPMAN

CHAPMAN BROTHERS

*Gordon E. Chapman*  
GORDON E. CHAPMAN

*Robert E. Sayers* } ROBERT E. SAYERS, WITNESS  
*Jean L. Sayers* } JEAN L. SAYERS, WITNESS

STATE OF MICHIGAN SS  
COUNTY OF ST. JOSEPH  
ON THIS 14 DAY OF October, 1960,  
BEFORE ME, A NOTARY PUBLIC IN AND FOR SAID COUNTY, APPEARED WILLIAM M. CHAPMAN AND GORDON E. CHAPMAN TO ME PERSONALLY KNOWN, WHO BEING EACH BY ME DULY SWORN DID SAY THAT THEY ARE THE CO-PARTNERS OF CHAPMAN BROTHERS, A CO-PARTNERSHIP, AND THAT THIS INSTRUMENT WAS SIGNED IN BEHALF OF SAID CO-PARTNERSHIP BY ITS CO-PARTNERS, AND THE SAID CO-PARTNERS WILLIAM M. CHAPMAN AND GORDON E. CHAPMAN ACKNOWLEDGED SAID INSTRUMENT TO BE THE FREE ACT AND DEED OF SAID CO-PARTNERSHIP.

*Jean L. Sayers*  
JEAN L. SAYERS, NOTARY PUBLIC, ST. JOSEPH COUNTY  
MY COMMISSION EXPIRES JUNE 18, 1960

### CERTIFICATE OF APPROVAL BY COUNTY ROAD COMMISSION

THIS PLAT HAS BEEN EXAMINED AND WAS APPROVED ON THE 14 DAY OF OCTOBER, 1960, BY THE ST. JOSEPH COUNTY BOARD OF ROAD COMMISSIONERS.

*Ivan Bent*  
IVAN BENT, CHAIRMAN  
*D. W. Arney*  
D. W. ARNEY, MEMBER  
*R. L. Crafts*  
R. L. CRAFTS, MEMBER

### TAX CERTIFICATE

OFFICE OF COUNTY TREASURER, ST. JOSEPH COUNTY  
I HEREBY CERTIFY THAT THERE ARE NO TAX LIENS OR TITLES HELD BY THE STATE ON THE LANDS DESCRIBED HEREON, AND THAT THERE NO TAX LIENS OR TITLES HELD BY INDIVIDUALS ON SAID LANDS, FOR THE FIVE YEARS PRECEDING THE 14 DAY OF October, 1960, AND THAT THE TAXES FOR SAID PERIOD OF FIVE YEARS ARE FULLY PAID, AS SHOWN BY THE RECORDS OF THIS OFFICE. THIS CERTIFICATE DOES NOT APPLY TO TAXES, IF ANY, NOW IN THE PROCESS OF COLLECTION BY TOWNSHIP, CITY, OR VILLAGE COLLECTING OFFICERS.

*Irene Hibbard Moore*  
IRENE HIBBARD MOORE, COUNTY TREASURER

### CERTIFICATE OF APPROVAL BY COUNTY PLAT BOARD

THIS PLAT WAS APPROVED ON THE 14 DAY OF October, 1960, BY THE ST. JOSEPH COUNTY PLAT BOARD.

*Donna E. Donmyer*  
DONNA E. DONMYER, REGISTER OF DEEDS  
*John W. Marvin*  
JOHN W. MARVIN, COUNTY CLERK  
*Irene Hibbard Moore*  
IRENE HIBBARD MOORE, COUNTY TREASURER  
*Richard E. Olin*  
RICHARD E. OLIN, DRAIN COMMISSIONER

### CERTIFICATE OF MUNICIPAL APPROVAL

THIS PLAT WAS APPROVED BY THE PARK TOWNSHIP BOARD AT A REGULAR MEETING HELD FEBRUARY 11, 1960.

*A. J. Peil*  
A. J. PEIL, TOWNSHIP CLERK

### DESCRIPTION

THE LAND EMBRACED IN THE ANNEXED PLAT OF OAKWOOD TERRACE NO. 1, A SUBDIVISION SITUATED IN THE NORTHWEST QUARTER OF SECTION 29, TOWN 5 SOUTH, RANGE II WEST, PARK TOWNSHIP, ST. JOSEPH COUNTY, MICH., IS DESCRIBED AS FOLLOWS: COMMENCING AT THE NORTHWEST CORNER OF SAID SECTION 29 AND RUNNING THENCE EAST ALONG THE NORTH LINE OF SAID SECTION FOR 600 FEET, THENCE SOUTH 183 FEET TO THE POINT OF BEGINNING, THENCE SOUTH 246 FEET, THENCE EAST 19.16 FEET, THENCE SOUTH 180 FEET, THENCE EAST 700 FEET, THENCE NORTH 180 FEET, THENCE EAST 34.24 FEET, THENCE NORTH 246 FEET TO THE SOUTH LINE OF OAKWOOD TERRACE, A SUBDIVISION SITUATED IN THE NORTHWEST QUARTER OF SAID SECTION, THENCE WEST ALONG SAID SOUTH LINE OF OAKWOOD TERRACE 753.40 FEET TO THE POINT OF BEGINNING. THIS SUBDIVISION CONTAINS 13 NUMBERED LOTS.

### SURVEYOR'S CERTIFICATE

I HEREBY CERTIFY THAT THE PLAT HEREON DELINEATED IS A CORRECT ONE AND THAT PERMANENT METAL MONUMENTS CONSISTING OF BARS NOT LESS THAN ONE-HALF INCH IN DIAMETER AND 36 INCHES IN LENGTH, ENCASED IN A CONCRETE CYLINDER AT LEAST 4 INCHES IN DIAMETER AND 36 INCHES IN DEPTH, HAVE BEEN PLACED AT ALL POINTS MARKED THUS (o) AS THEREON SHOWN AT ALL ANGLES IN THE BOUNDARIES OF THE LAND PLATTED, AT ALL THE INTERSECTIONS OF STREETS, AND AT THE INTERSECTIONS OF STREETS WITH THE BOUNDARIES OF THE PLAT AS SHOWN ON SAID PLAT.

*Robert E. Sayers*  
ROBERT E. SAYERS, REGISTERED LAND SURVEYOR

REGISTER'S OFFICE  
COUNTY OF ST. JOSEPH  
STATE OF MICHIGAN

Received for Record, this 17 day of October, 1960, at 9:20 AM.  
By John W. Marvin  
County Clerk  
Page 22  
*John W. Marvin*  
John W. Marvin, County Clerk

SCALE: 1" = 60 FT.



ALL DIMENSIONS ARE IN FEET AND DECIMALS THEREOF.