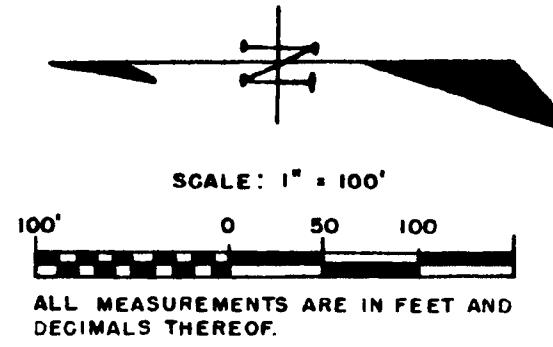
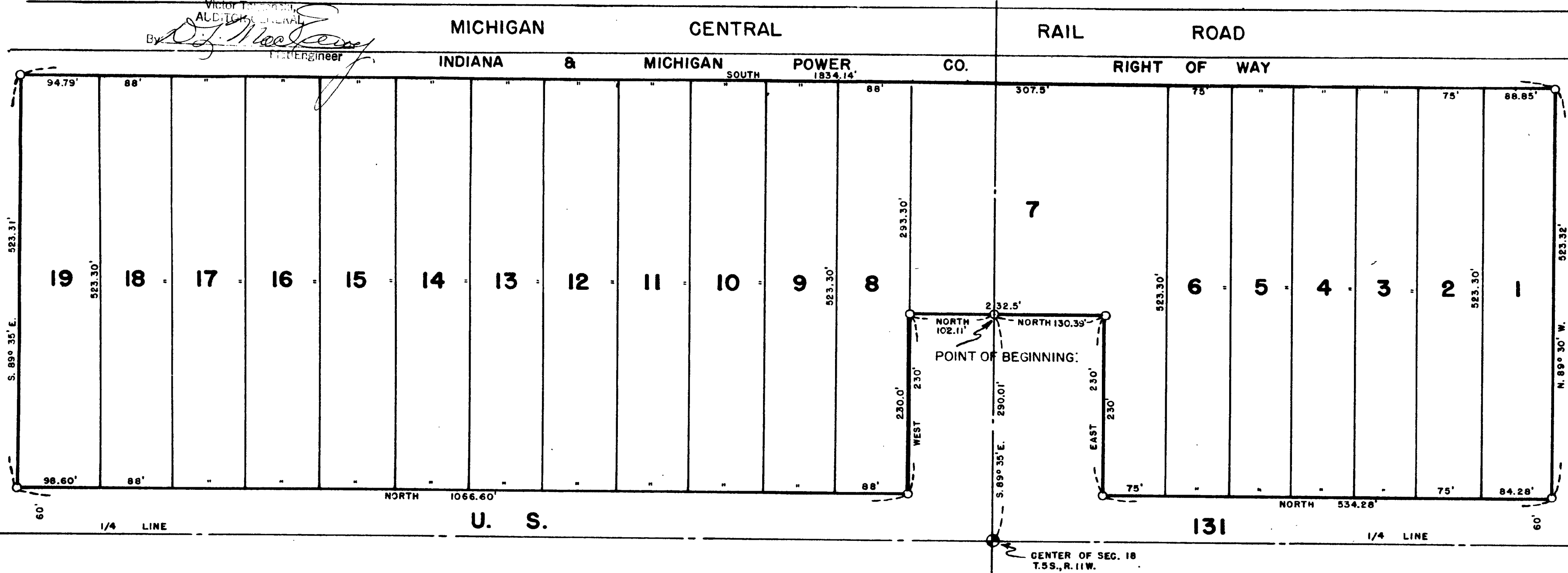


EXAMINED AND APPROVED  
Date JAN 31 1955

# MULLIN SUBDIVISION

IN THE EAST 1/2 OF SEC. 18, T.5S., R.11W., TOWNSHIP OF PARK,  
ST. JOSEPH COUNTY, MICHIGAN

*Victor J. Jamet*  
Victor J. Jamet  
REGISTERED PROFESSIONAL ENGINEER



REGISTER'S OFFICE,  
COUNTY OF ST. JOSEPH,  
STATE OF MICHIGAN  
Received for Record, this 3rd day of February, A. D. 1955, at 9:30 o'clock A. M. in Vol. 3 of Deeds on Page 45  
*Edmond C. Russell*  
Register of Deeds

### DEDICATION

KNOW ALL MEN BY THESE PRESENTS, that we, William Mullin and Mary F. Mullin, husband and wife, as proprietors, have caused the land embraced in the annexed plat to be surveyed, laid out and platted, to be known as "Mullin Subdivision" in the East 1/2 of Section 18, T.5 S., R.11 W., Township of Park, St. Joseph County, Michigan.

Signed and Sealed in the Presence of  
*William Mullin* (L.S.)  
*Mary F. Mullin* (L.S.)  
Witnesses: *Jay R. White*, *Margaret J. White*

### ACKNOWLEDGMENT

STATE OF MICHIGAN  
County of St. Joseph  
On this 11th day of December, 1954, before me, a Notary Public in and for said County, personally came the above named William Mullin and Mary F. Mullin, husband and wife, as proprietors, known to me to be the persons who executed the above dedication, and acknowledged the same to be their free act and deed.  
*George D. Bradford*  
Notary Public, St. Joseph County  
My Commission expires 3/2/56

### DESCRIPTION OF LAND PLATTED

The land embraced in the annexed plat of "Mullin Subdivision" in the East 1/2 of Section 18, T.5 S., R.11 W., Township of Park, St. Joseph County, Michigan, is described as follows: Beginning on the quarter line 290.01 feet East of the center of said Section 18 and running thence North 102.11 feet; thence West 230 feet; thence North 1066.6 feet; thence South 89 degrees 35 minutes East 523.31 feet; thence South 1834.14 feet; thence North 89 degrees 30 minutes West 523.32 feet; thence North 534.28 feet; thence East 230 feet; thence North 130.39 feet to beginning.

### MUNICIPAL APPROVAL

This plat was approved by the Township Board of the Township of Park at a meeting held Jan. 7, 1955.  
*A. L. Peel* (Clerk)

### SURVEYOR'S CERTIFICATE

I hereby certify that the plat hereon delineated is a correct one, and that permanent monuments consisting of iron rods at least one half inch in diameter and 36 inches in length, encased in concrete cylinders four inches in diameter and 36 inches in length, have been set at points marked thus (O) as thereon shown at all angles in the boundaries of the land platted, at all intersections of the lines of streets and at intersections of the lines of streets with the boundaries of the plat.  
*Earl H. Jamet*  
Registered Professional Engineer

### CERTIFICATE AS TO STATE TRUNK LINE OR FEDERAL AID ROADS

We hereby certify that said plat appears to include land located on a state trunk line or federal aid road.  
*Edmond C. Russell* (County Register of Deeds)  
*John W. Marvin* (County Clerk)  
*Irene Hibbard* (County Treasurer)  
*Richard Olin* (County Drain Commissioner)

### APPROVAL BY COUNTY PLAT BOARD

This plat was approved on the 14th day of January, 1955, by the St. Joseph County Plat Board.  
*Edmond C. Russell* (County Register of Deeds)  
*John W. Marvin* (County Clerk)  
*Irene Hibbard* (County Treasurer)  
*Richard Olin* (County Drain Commissioner)

### APPROVAL BY BOARD OF COUNTY ROAD COMMISSIONERS

This plat has been examined and was approved on the 30th day of December, 1954, by the St. Joseph County Board of Road Commissioners.  
*Ivan Bent* (Chairman)  
*Paul L. Ahlgren* (Member)  
*Noyes T. Percy* (Member)

### COUNTY TREASURER'S CERTIFICATE

Office of County Treasurer, St. Joseph County.  
I hereby certify that there are no tax liens or titles held by the State on the lands described hereon, and that there are no tax liens or titles held by individuals on said lands, for the five years preceding the 1st day of January, 1954 and that the taxes for said period of five years are all paid, as shown by the records of this office.  
This certificate does not apply to taxes, if any, now in process of collection by township, city or village collecting officers.  
*Irene Hibbard* (County Treasurer)

APPROVED  
*Charles M. Ziegler*  
CHARLES M. ZIEGLER  
STATE HIGHWAY COMMISSIONER