

COOK'S FISHER LAKE PLAT

A SUBDIVISION IN THE SOUTHEAST FR 1/4 OF SECTION 34,
T. 5 S. R. 11 W., PARK TOWNSHIP, ST. JOSEPH, COUNTY, MICHIGAN.

DESCRIPTION OF LAND PLATTED

The land embraced in the annexed plat of Cook's Fisher Lake Plat, a subdivision in the Southeast fractional quarter of section 34, T. 5 S. R. 11 W., Park Township, St. Joseph County, Michigan.

is described as follows:

Beginning 709.50 feet North and N 88° 58' E 33.00 feet, from the S 1/4 corner of Section 34, T. 5 S. R. 11 W., Park Township St. Joseph County, Michigan; thence North parallel to and 33.00 feet East of the North and South quarter line of Section 34, 1330.94 feet; thence S 81° 09' E 277.41 feet; thence S 7° 17' E 132.71 feet; thence S 53° 05' E 308.68 feet; thence S 14° 44' E 142.81 feet; thence S 88° 58' W 394.10 feet; thence South 642.63 feet; thence N 88° 58' E 373.05 feet; thence S 0° 06' E 180.00 feet; thence S 88° 58' W 553.40 feet to the point of beginning. 18 lots.

SURVEYOR'S CERTIFICATE

I hereby certify that the plat hereon delineated is a correct one and that permanent metal monuments consisting of bars not less than one-half inch in diameter and 36 inches in length, or shorter bars of not less than one-half inch in diameter lapped over each other at least 6 inches with an over-all length of not less than 36 inches, enclosed in a concrete cylinder at least 4 inches in diameter and 36 inches in depth have been placed at points marked thus (O) as thereon shown at all angles in the boundaries of the land platted, at all the intersections of streets, intersections of alleys, or of streets and alleys, and at the intersections of streets and alleys with the boundaries of the plat as shown on said plat.

John L. Corbit
Registered Land Surveyor
John L. Corbit

CERTIFICATE OF MUNICIPAL APPROVAL

This plat was approved by the Township Board of the Township of Park at a meeting held Feb. 7, 1958, and that the width of lots is in compliance with requirements of Section 30, Act 172, of 1929, as amended.

A. L. Peel
Clerk.

COUNTY TREASURER'S CERTIFICATE

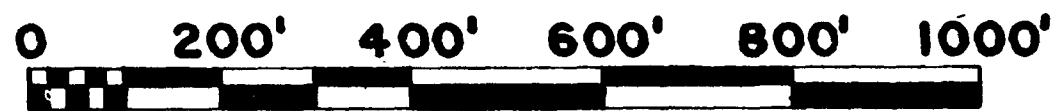
Office of County Treasurer, St. Joseph County. I hereby certify, that there are no tax liens or titles held by the State on the lands described hereon, and that there are no tax liens or titles held by individuals on said lands, for the five years preceding the 23rd day of January, 1958, and that the taxes for said period of five years are all paid, as shown by the records of this office.

This certificate does not apply to taxes, if any, now in process of collection by township, city or village collecting officers.

Irene Hibbard Moore
Irene Hibbard Moore (County Treasurer)

REGISTER'S OFFICE,
COUNTY OF ST. JOSEPH,
STATE OF MICHIGAN.

Received for Record, this 16th day of May, A. D. 1958, at 9:00 o'clock a.m. in Vol. 3 on Page 988
Donna E. Donmyer
County Register of Deeds



SCALE 1" = 200'

ALL MEASUREMENTS ARE IN FEET AND DECIMALS THEREOF.

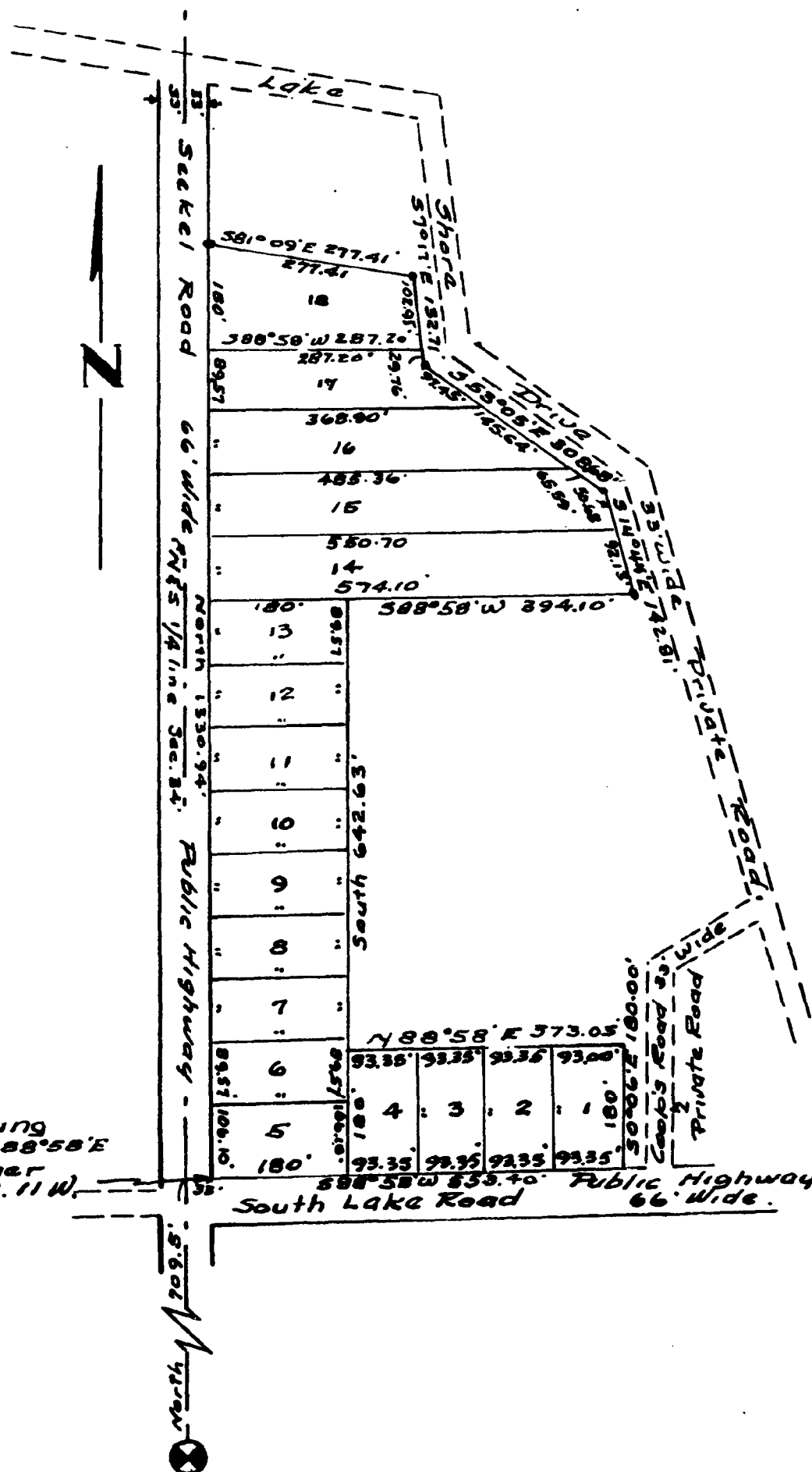
EXAMINED AND APPROVED

Date May 15, 1958

Frank S. Szymanski

Frank S. Szymanski
AUDITOR GENERAL

By *D. J. Mackay*
Plat Engineer



DEDICATION

KNOW ALL MEN BY THESE PRESENTS, that we, Charles A. Cook, and Beatrice V. Cook, husband and wife,

as proprietors, have caused the land embraced in the annexed plat to be surveyed, laid out and platted, to be known as Cook's Fisher Lake Plat, a subdivision in the Southeast fractional quarter of section 34, T. 5 S. R. 11 W., Park Township, St. Joseph County, Michigan.

and that the streets Seskel Road and South Lake Road as shown on said plat are hereby dedicated to the use of the public, and Lake Shore Drive and Cooks Road are private Roads.

Signed and Sealed in the Presence of
Charles A. Cook (T.S.)
Geraldine M. Kline (Witness) Charles A. Cook
R. A. Wade (Witness) *Beatrice V. Cook* (T.S.)
R. A. Wade (Witness) Beatrice V. Cook

ACKNOWLEDGMENT

STATE OF MICHIGAN
County of St. Joseph ss.
On this 15th day of May, 1958, before me, a Notary Public in and for said County, personally came the above named Charles A. Cook and Beatrice V. Cook, husband and wife,

known to me to be the persons who executed the above dedication, and acknowledged the same to be their free act and deed.
Geraldine M. Kline
Geraldine M. Kline Notary Public, St. Joseph County
My Commission expires Oct. 18, 1959

APPROVAL BY COUNTY PLAT BOARD

This plat was approved on the 13th day of May, 1958, by the St. Joseph County Plat Board

Donna E. Donmyer (County Register of Deeds)
John W. Marvin (County Clerk)
Irene Hibbard Moore (County Treasurer)
Richard K. Olin (County Drain Commissioner)

APPROVAL BY BOARD OF COUNTY ROAD COMMISSIONERS

This plat has been examined and was approved on the 8th day of May, 1958, by the St. Joseph County Board of Road Commissioners.

Noyes T. Percy (Chairman)
Frank H. Bent (Member)
Paul L. Ahlgrim (Member)