

EXAMINED AND APPROVED
SEP 17 1956

Date

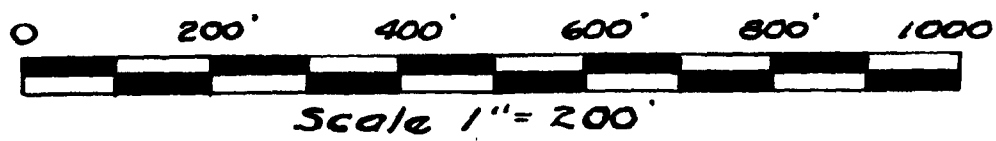
Frank S. Szymanski
AUDITOR GENERAL

By *J. J. Mackey*
Plat Engineer

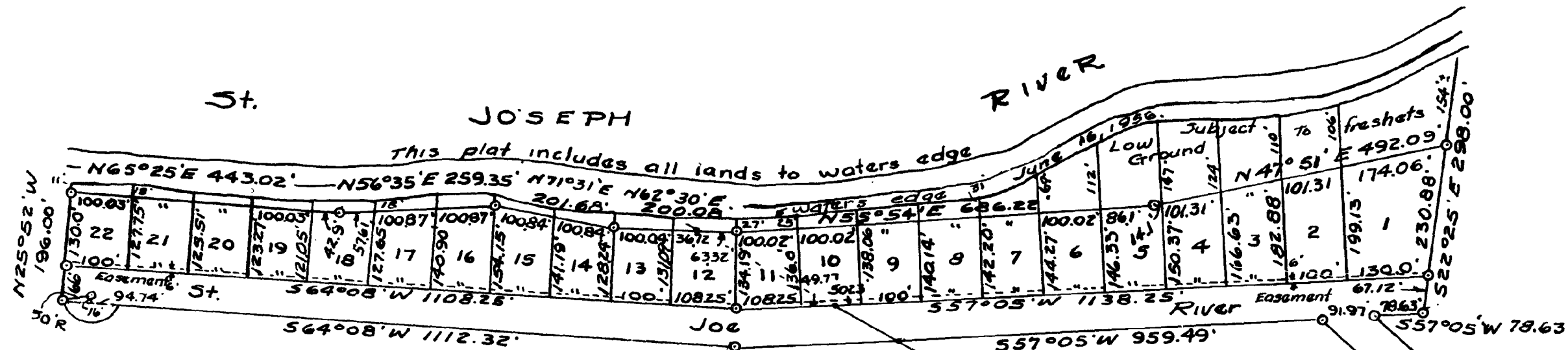
CRIBE SUBDIVISION

A SUBDIVISION IN SECTIONS 12 & 13 T. 8 S., R. 13 W., MOTTVILLE TOWNSHIP, ST. JOSEPH COUNTY, MICHIGAN

See Restrictions recorded in Liber 281 of Deeds, p. 437.
See Amended Restrictions recorded in Liber 283 of Deeds, p. 623.



ALL MEASUREMENTS ARE IN FEET & DECIMALS THEREOF



REGISTRAR'S OFFICE,
COUNTY OF ST. JOSEPH,
STATE OF MICHIGAN
Received for Record this 19th day of September A.D. 1956 at 9:00 o'clock A.M. and entered in Vol. 3 of Plats on Page 76
Dorothy E. Dornmyer

COUNTY TREASURER'S CERTIFICATE
Office of County Treasurer, St. Joseph County
I hereby certify, that there are no tax liens or titles held by the State on the lands described hereon, and that there are no tax liens or titles held by individuals on said lands, for the five years preceding the 17th day of July 1956 and that the taxes for said period of five years are all paid, as shown by the records of this office.
Irene Hibbard
Irene Hibbard (County Treasurer)

DEDICATION

KNOW ALL BY THESE PRESENTS, that we Jacob C. Cripe and Kathryn E. Cripe, husband and wife, as proprietors, have caused the land embraced in the annexed plat to be surveyed, laid out and platted to be known as CRIBE SUBDIVISION, a subdivision in Sections 12 and 13, T. 8 S., R. 13 W., Mottville Township, St. Joseph County, Michigan and the street St. Joe River Drive as shown on said plat is hereby dedicated to the use of the public. An easement 6 foot in width North of the North line of said street from the East line of Lot 1 to the West line of Lot 22, said easement indicated on this plat are not dedicated to the public but the right to use said easement is hereby reserved for public utilities and no permanent structures are to be erected within the lines of said easement.

SURVEYOR'S CERTIFICATE

I hereby certify that the plat hereon delineated is a correct one and that permanent metal monuments consisting of bars not less than one-half inch in diameter and 36 inches in length, or shorter bars of not less than one-half inch in diameter lapped over each other at least 6 inches with an overall length of not less than 36 inches, encased in concrete cylinder at least 4 inches in diameter and 36 inches in depth have been placed at points marked thus (..O..) as thereon shown at all angles in the boundaries of the land platted, at all the intersections of streets; intersections of alleys, or of streets and alleys at the intersections of streets and alleys with the boundaries of the plat as shown on said plat.

DESCRIPTION OF LAND PLATTED

Beginning on the centerline of State Trunkline US 131, S 89° 36' E 374.25' and 33.74 feet North of the Quarter Corner common to Sections 12 and 13, T. 8 S., R. 13 W., Mottville Township, St. Joseph County, Michigan; thence N 71° 27' 30" W 535.91 feet; thence N 77° 03' 30" W 840.19 feet; thence S 57° 05' W 959.49 feet; thence S 64° 08' W 1112.32 feet; thence N 25° 52' W 196.00 feet to top of bluff along the St. Joseph River; thence meandering said River N 65° 25' E 443.02 feet; thence N 56° 35' E 259.35 feet; thence N 71° 31' E 201.08 feet; thence N 62° 30' E 200.08 feet; thence N 55° 34' E 686.22 feet; thence N 47° 51' E 492.09 feet; thence S 22° 23' E leaving bluff along River 298.00 feet; thence S 37° 05' W 78.63 feet; thence S 77° 03' 30" E 779.35 feet; thence S 71° 27' 30" E 361.69 feet to the centerline of said State Trunkline US 131; thence S 37° 22' W along the centerline of said Trunkline US 131, 69.73 feet to the point of beginning.

Signed and Sealed in the presence of:
Arthur T. Gait (Witness) *Jacob C. Cripe* (L.S.)
F. L. Moore (Witness) *Kathryn E. Cripe* (L.S.)

John L. Corbit
John L. Corbit Registered Land Surveyor

CERTIFICATE AS TO STATE TRUNK LINE OR FEDERAL AID ROADS

We hereby certify that said plat appears to include land located on a state trunk line or Federal aid road.

Dorothy E. Dornmyer (County Register of Deeds)
John W. Marvin (County Clerk)
Irene Hibbard (County Treasurer)

APPROVAL BY BOARD OF COUNTY ROAD COMMISSIONERS

This plat has been examined and was approved on the 24th day of July 1956 by the ST. JOSEPH County BOARD OF ROAD COMMISSIONERS:
Paul L. Ahlgren (Chairman)
Walter Quandt (Member)
Sven Bent (Member)

STATE OF MICHIGAN
County of St. Joseph
On this 17th day of July 1956 before me, a Notary Public in and for said County, personally came the above named Jacob C. Cripe and Kathryn E. Cripe, husband and wife, known to me to be the persons who executed the above dedication, and acknowledged the same to be their free act and deed.
Arthur T. Gait
Notary Public St. Joseph County
My Commission expires Feb. 16, 1957

MUNICIPAL APPROVAL
This plat was approved by the Township Board of the Mottville Township of Mottville at a meeting held July 10, 1956
Walter Quandt (Clerk)

APPROVAL BY COUNTY PLAT BOARD
This plat was approved on the 27th day of August 1956 by the St. Joseph County Plat Board:
Dorothy E. Dornmyer (County Register of Deeds)
John W. Marvin (County Clerk)
Irene Hibbard (County Treasurer)
Richard K. Olin (County Drain Commissioner)

APPROVED
Charles M. Stigler
CHARLES M. STIGLER
STATE HIGHWAY COMMISSIONER