

FM
12-29-52

SUPERVISOR'S PLAT NO. 2 OF LOCKPORT TOWNSHIP

IN SECTION 16, TOWN 6 SOUTH, RANGE 11 WEST, LOCKPORT TOWNSHIP, ST. JOSEPH COUNTY, MICHIGAN.

DESCRIPTION OF LAND PLATTED:

The land embraced in the annexed Supervisor's Plat No. 2 of Lockport Township in Section 16, Town 6 South, Range 11 West, Lockport Township, St. Joseph County, Michigan, is described as follows: Beginning at the northeast corner of said Section 16 in the center of the county road and running west on the quarter line 323.5 feet, thence South 204.7 feet, thence South 0 degrees 52 minutes west 94.74 feet, thence South 42 degrees 40 minutes west 239.37 feet, thence South 29 degrees 26 minutes west 807.30 feet, thence South 50 degrees 13 minutes west 964.95 feet, thence South 72 degrees 2 minutes west 800.00 feet, thence South 58 degrees 36 minutes west 280.29 feet, thence South 158.88 feet to the St. Joseph River, thence North 58 degrees 36 minutes east 300.00 feet, thence North 72 degrees 2 minutes east 300.00 feet, thence North 68 degrees 2 minutes east 179.50 feet, thence North 82 degrees 2 minutes east 72.04 feet, thence North 72 degrees 2 minutes east 253.00 feet, thence North 55 degrees 15 minutes east 647.88 feet, thence North 23 degrees 30 minutes east 121.20 feet, thence North 53 degrees 26 minutes east 359.40 feet, thence North 29 degrees 26 minutes east 782.96 feet, thence North 42 degrees 40 minutes east 250.00 feet, thence North 73 degrees 48 minutes east 223.66 feet, thence Leaving said St. Joseph River north 300.00 feet to the south line of said county road, thence east along said south line 16.60 feet, thence north along the east line of said county road 33 feet, thence leaving said county road east 367.29 feet to the said St. Joseph River, thence North 51 degrees 24 minutes east 778.73 feet, thence North 53 degrees 58 minutes east 844.52 feet, thence North 29 degrees 15 minutes west 281.00 feet, thence North 20 degrees 0 minutes east 370.00 feet, thence Leaving said St. Joseph River west 192.67 feet, thence South 20 degrees 0 minutes west 359.63 feet, thence South 8 degrees 2 minutes west 363.29 feet, thence South 51 degrees 24 minutes west 874.09 feet, thence West 225.99 feet to center of said county road, thence South 40 feet to Beginning.

CERTIFICATE OF APPROVAL BY COUNTY PLAT BOARD:

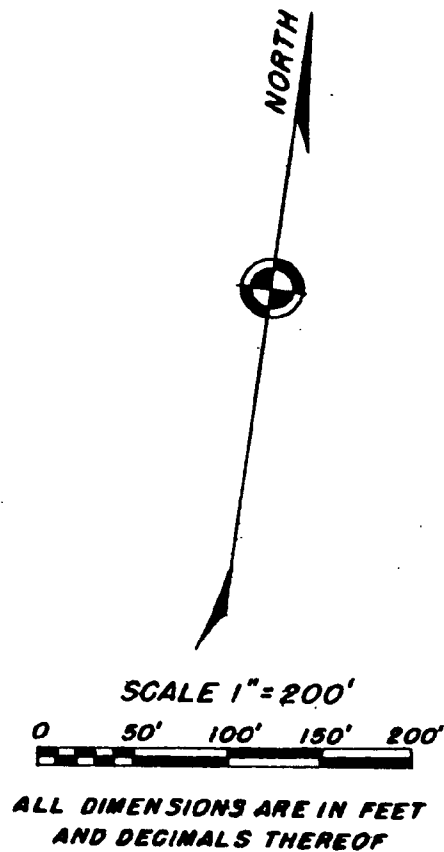
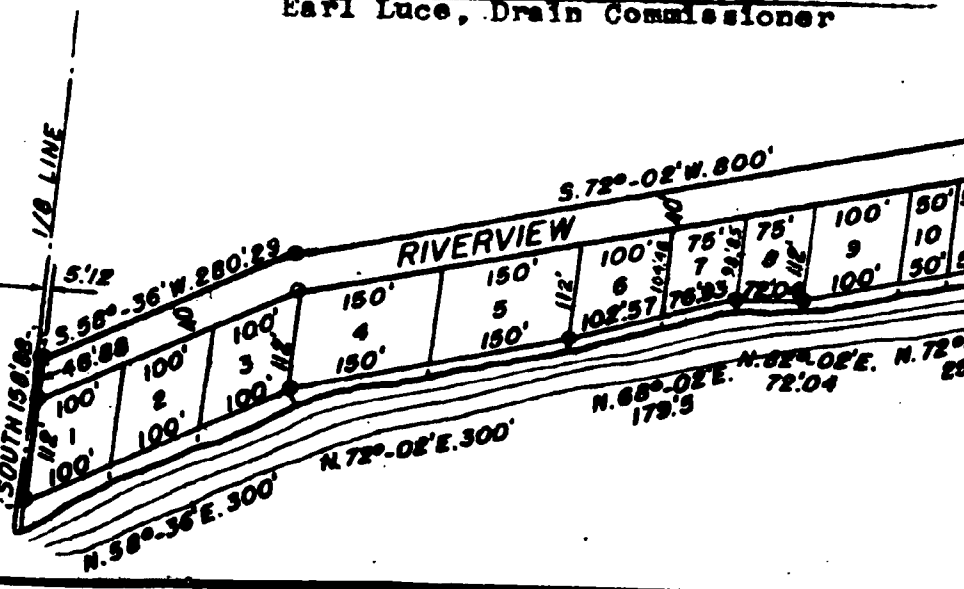
This plat was approved on the 18th day of December, 1952.

Eleanor C. Russell
Eleanor C. Russell, Register of Deeds

John W. Marvin
John W. Marvin, County Clerk

Eva M. Brumbaugh
Eva M. Brumbaugh, County Treasurer

Earl Luce
Earl Luce, Drain Commissioner



REGISTER'S OFFICE,
COUNTY OF ST. JOSEPH,
STATE OF MICHIGAN.

Received for Record, this 2nd day of January, A. D. 1953 at 9:30 o'clock A.M., and Recorded in Vol. 3 of Plats on Page 16 of *Plats*
Eleanor C. Russell
Register of Deeds.

SURVEYOR'S CERTIFICATE:

I hereby certify that the plat hereon delineated is a correct one and that permanent metal monuments consisting of bars not less than one-half inch in diameter and 48 inches in length, encased in a concrete cylinder at least four inches in diameter and 48 inches in depth, have been placed at all points marked thus: O as thereon shown at all angles in the boundaries of the land platted, at all intersections of streets and at the intersections of streets with the boundaries of the plat as shown on said plat.

Wendy G. Smith
Wendy G. Smith,
Registered Land Surveyor.

DEDICATION:

Know all men by these presents, that I, Lester R. Schrader, Supervisor of Lockport Township, St. Joseph County, State of Michigan, by virtue of authority in me vested by Section 51, Act 172 of 1929, having been duly authorized by the Township Board, have caused the land embraced in the annexed plat to be surveyed, laid out and platted, to be known as Supervisor's Plat No. 2 of Lockport Township in Section 16, Town 6 South, Range 11 West, Lockport Township, St. Joseph County, Michigan, and that part of the County Road which lies within said plat is now being used by the public, and the drives designated "Private" are now being used as private drives by the owners of lots in said subdivision. Lots extend to water's edge as shown on said plat.

Witnessed:
John W. Marvin
JOHN W. MARVIN
Lester R. Schrader
Lester R. Schrader,
Supervisor of
Lockport Township.

STATE OF MICHIGAN
COUNTY OF ST. JOSEPH SS

On this 13 day of December, 1952, before me, a Notary Public in and for said county, personally appeared the above named Lester R. Schrader, Supervisor of Lockport Township, known to me to be the person who executed the above dedication and acknowledged the same to be his free act and deed as such supervisor.

John W. Marvin
JOHN W. MARVIN
Notary Public in and for
St. Joseph County, Michigan.
My commission expires Dec 14 1956

CERTIFICATE OF MUNICIPAL APPROVAL:

This plat was approved by the Township Board of the Township of Lockport at a meeting held Dec 12th, 1952.

Louis Haldy
Louis Haldy, Clerk.

CERTIFICATE OF APPROVAL BY COUNTY ROAD COMMISSION:

This plat has been examined and was approved on the 18th day of December, 1952, by the St. Joseph County Board of Road Commissioners.

Examined and Approved
December 29, 1952
Mayne Jewell Pupp
Mayne Jewell Pupp, Deputy Auditor General

Ivan Bent
Ivan Bent, Chairman
Paul L. Ahlgren
Paul L. Ahlgren, Member

Arthur Beasley
Arthur Beasley, Member

