

See Restrictions to Plat recorded in Liber 365 of Records, p 740
 See Amendment to Restrictions " " " 400 " " " 718

GOLFVIEW

A SUBDIVISION SITUATED IN THE SOUTH 1/2 OF SECTION 12, TOWN 5 SOUTH, RANGE 12 WEST, FLOWERFIELD TOWNSHIP, ST. JOSEPH COUNTY, MICHIGAN.

PROPRIETORS CERTIFICATE:

WE, AS PROPRIETORS, CERTIFY THAT WE HAVE CAUSED THE LAND EMBRACED IN THIS PLAT TO BE SURVEYED, DIVIDED, MAPPED AND DEDICATED AS REPRESENTED ON THIS PLAT AND THAT PORTION OF JOHNSON ROAD WHICH LIES WITHIN THE BOUNDARY OF SAID PLAT IS FOR THE USE OF THE PUBLIC; THAT THE PUBLIC UTILITY EASEMENTS ARE PRIVATE EASEMENTS AND THAT ALL OTHER EASEMENTS ARE FOR THE USES SHOWN ON THE PLAT.

Edward E. Rowell, Jr. EDWARD E. ROWELL, JR. 1041 SHELBY ST. PONTIAC, MICH., 48054
Diane L. Powell DIANE L. POWELL 1041 SHELBY ST. PONTIAC, MICH., 48054
Robert E. Sayers ROBERT E. SAYERS WITNESS
Jean L. Sayers JEAN L. SAYERS WITNESS

ACKNOWLEDGEMENT

STATE OF MICHIGAN COUNTY OF ST. JOSEPH SS PERSONALLY CAME BEFORE ME THIS 26th DAY OF NOVEMBER, 1972, THE ABOVE NAMED EDWARD E. ROWELL, JR. AND DIANE L. POWELL, HIS WIFE, TO ME KNOWN TO BE THE PERSONS WHO EXECUTED THE FOREGOING INSTRUMENT AND ACKNOWLEDGED THAT THEY EXECUTED THE SAME AS THEIR FREE ACT AND DEED.

Jean L. Sayers Notary Public, St. Joseph County, Michigan. My Commission Expires May 29, 1976.

COUNTY TREASURER'S CERTIFICATE:

THE RECORDS IN MY OFFICE SHOW NO UNPAID TAXES OR SPECIAL ASSESSMENTS FOR THE FIVE YEARS PRECEDING Nov-26, 1972, INVOLVING THE LANDS INCLUDED IN THIS PLAT.

Stanley M. Huff STANLEY M. HUFF, COUNTY TREASURER

COUNTY DRAIN COMMISSIONER'S CERTIFICATE:

APPROVED ON NOVEMBER 28th, 1972 AS COMPLYING WITH SECTION 192 OF ACT 288, P.A. 197 AND THE APPLICABLE RULES AND REGULATIONS PUBLISHED BY MY OFFICE IN THE COUNTY OF ST. JOSEPH.

Lloyd C. Clapp LLOYD C. CLAPP, DRAIN COMMISSIONER

CERTIFICATE OF COUNTY ROAD COMMISSIONERS:

APPROVED ON November 28, 1972 AS COMPLYING WITH SECTION 103 OF ACT 288, P.A. 197 AND THE APPLICABLE PUBLISHED RULES AND REGULATIONS OF THE BOARD OF ROAD COMMISSIONERS OF ST. JOSEPH COUNTY.

Francis Shellenbarger FRANCIS SHELLENBARGER, CHAIRMAN
Carl L. Roberts CARL L. ROBERTS, MEMBER

R.W. Arney R.W. ARNEY, MEMBER

COUNTY PLAT BOARD CERTIFICATE:

THIS PLAT HAS BEEN REVIEWED AND IS APPROVED BY THE ST. JOSEPH COUNTY PLAT BOARD ON Dec. 21st, 1972 AS BEING IN COMPLIANCE WITH ALL OF THE PROVISIONS OF ACT 288, P.A. 197, AND THE PLAT BOARD'S APPLICABLE RULES AND REGULATIONS.

Donna E. Donmyer DONNA E. DONMYER, REGISTER OF DEEDS
Evangelina Marwin EVANGELINE MARWIN, COUNTY CLERK (DEPUTY)

Stanley M. Huff STANLEY M. HUFF, COUNTY TREASURER

CERTIFICATE OF MUNICIPAL APPROVAL:

I HEREBY CERTIFY THAT THIS PLAT WAS APPROVED BY THE TOWNSHIP BOARD OF THE TOWNSHIP OF FLOWERFIELD AT A MEETING HELD DECEMBER 15, 1972 AND WAS REVIEWED AND FOUND TO BE IN COMPLIANCE WITH ACT 288, P.A. 197. THIS PLAT WAS APPROVED BY THE ST. JOSEPH COUNTY HEALTH DEPARTMENT ON NOVEMBER 27, 1972.

Doris Curtis DORIS CURTIS, CLERK

REGISTER OF DEEDS OFFICE ST. JOSEPH COUNTY OF MICHIGAN
 THIS PLAT OF GOLFVIEW WAS RECORDED THIS 30th DAY OF JANUARY, 1973, AT 1:16 O'CLOCK P.M. IN LIBER 5 OF PLATS ON PAGE 49

Ethel M. Kirby ETHEL M. KIRBY, DEPUTY REGISTER OF DEEDS

SURVEYOR'S CERTIFICATE:

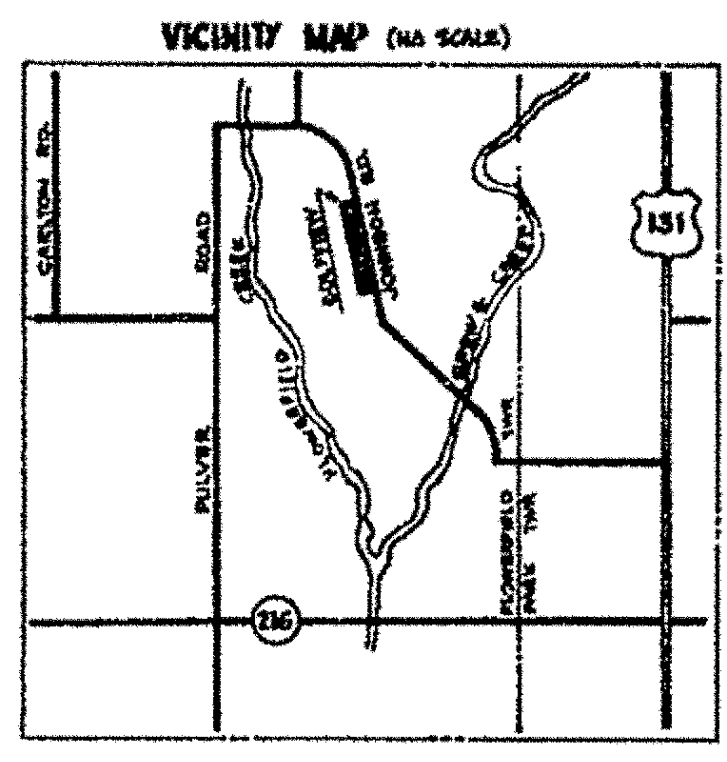
I, ROBERT E. SAYERS, SURVEYOR, CERTIFY THAT I HAVE SURVEYED, DIVIDED AND MAPPED THE LAND SHOWN ON THIS PLAT, DESCRIBED AS FOLLOWS: GOLFVIEW, A SUBDIVISION SITUATED IN THE SOUTH 1/2 OF SECTION 12, TOWN 5 SOUTH, RANGE 12 WEST, FLOWERFIELD TOWNSHIP, ST. JOSEPH COUNTY, MICHIGAN, IS DESCRIBED AS FOLLOWS: COMMENCING AT THE 1/4 CORNER COMMON TO SECTIONS 12 AND 13 IN SAID FLOWERFIELD TOWNSHIP AND RUNNING THENCE S89°46'46"E ALONG THE SOUTH LINE OF SAID SECTION 12 A DISTANCE OF 59.93 FEET, THENCE N5°44'48"W 500 FEET TO THE POINT OF BEGINNING; THENCE N5°44'48"W 250 FEET TO THE P.C. OF A 839.02 FOOT RADIUS CURVE TO THE LEFT, THENCE NWLY ALONG SAID CURVE AN ARC DISTANCE OF 167.93 FEET (SAID CURVE HAVING AN "X" ANGLE OF 0°51' AND BEING SUBTENDED BY A CHORD BEARING N 14°07'14"W 167.25 FEET), THENCE N 23°02'46"W 116.5 FEET, THENCE S 66°57'16"W 208 FEET, THENCE S 23°02'44"E 116.95 FEET, THENCE S 5°44'48"E 501.78 FEET, THENCE N 84°48'16"E 208 FEET TO THE POINT OF BEGINNING. THIS SUBDIVISION CONTAINS 12 NUMBERED LOTS. THAT I HAVE MADE SUCH SURVEY, LAND-DIVISION AND PLAT BY THE DIRECTION OF THE OWNERS OF SUCH LAND, THAT SUCH PLAT IS A CORRECT REPRESENTATION OF ALL THE EXTERIOR BOUNDARIES OF THE LAND SURVEYED AND THE SUBDIVISION OF IT. THAT THE REQUIRED MONUMENTS AND LOT MARKERS HAVE BEEN LOCATED IN THE GROUND AS REQUIRED BY SECTION 125 OF THE ACT. THAT THE ACCURACY OF THE SURVEY IS WITHIN THE LIMITS REQUIRED BY SECTION 126 OF THE ACT. THAT THE BEARINGS SHOWN ON THE PLAT ARE EXPRESSED AS REQUIRED BY SECTION 126(3) OF THE ACT AND AS EXPLAINED IN THE LEGEND

Robert E. Sayers ROBERT E. SAYERS, REGISTERED LAND SURVEYOR # 7874 P.O. BOX 22, STURGIS, MICHIGAN, 49091

NOVEMBER 28, 1972 DATE

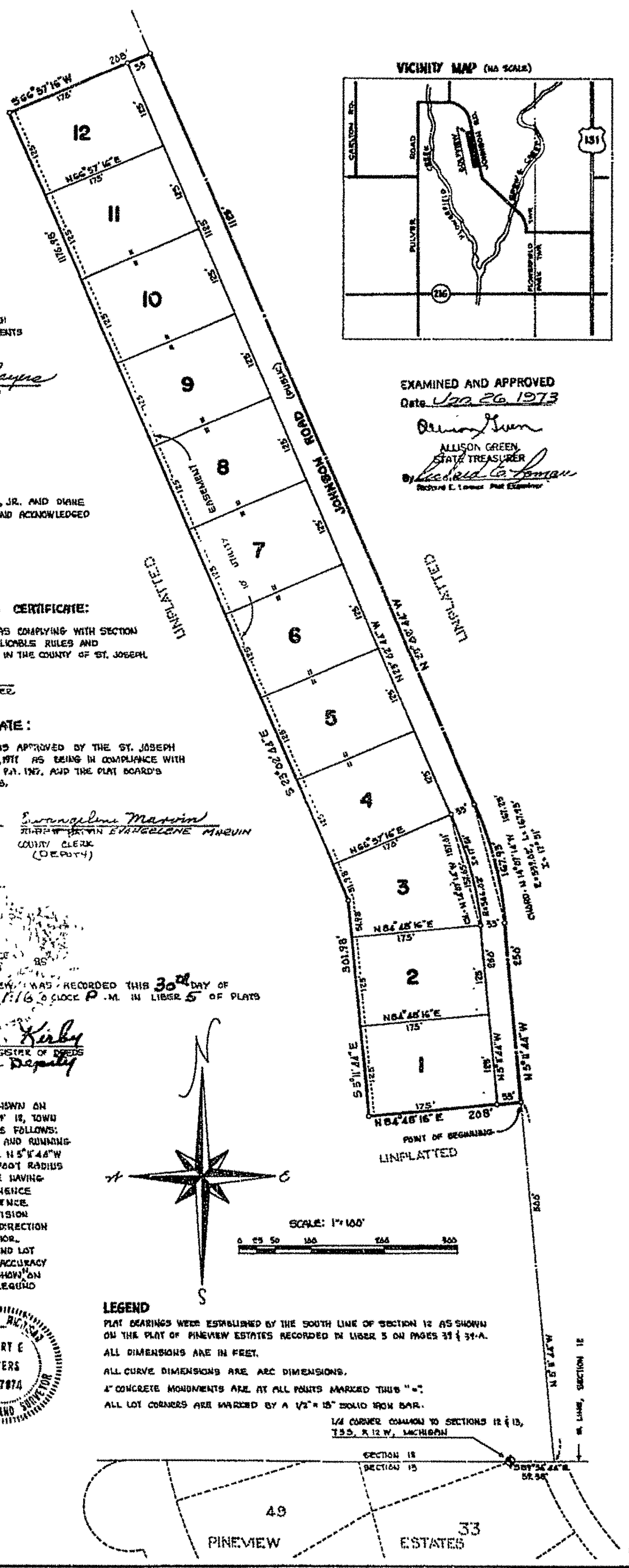


This plat is subject to restrictions as required by Act 288 of 1967, as amended on certain lots with respect to the requirements of the Michigan Department of Natural Resources and/or the Michigan Department of Public Health, which are recorded in Liber 365, Page 740 & 741 of records of this county.



EXAMINED AND APPROVED
 Date Jan 26 1973
Allison Green ALLISON GREEN, STATE TREASURER

Richard C. Loman RICHARD C. LOMAN, P.M.E. ENGINEER



LEGEND
 PLAT BEARINGS WERE ESTABLISHED BY THE SOUTH LINE OF SECTION 12 AS SHOWN ON THE PLAT OF PINEVIEW ESTATES RECORDED IN LIBER 5 ON PAGES 37 & 37-A.
 ALL DIMENSIONS ARE IN FEET.
 ALL CURVE DIMENSIONS ARE ARC DIMENSIONS.
 4" CONCRETE MONUMENTS ARE AT ALL POINTS MARKED THIS "M".
 ALL LOT CORNERS ARE MARKED BY A 1/2" x 15" SOLID IRON BAR.
 1/4 CORNER COMMON TO SECTIONS 12 & 13, T.S.S. R 12 W, MICHIGAN