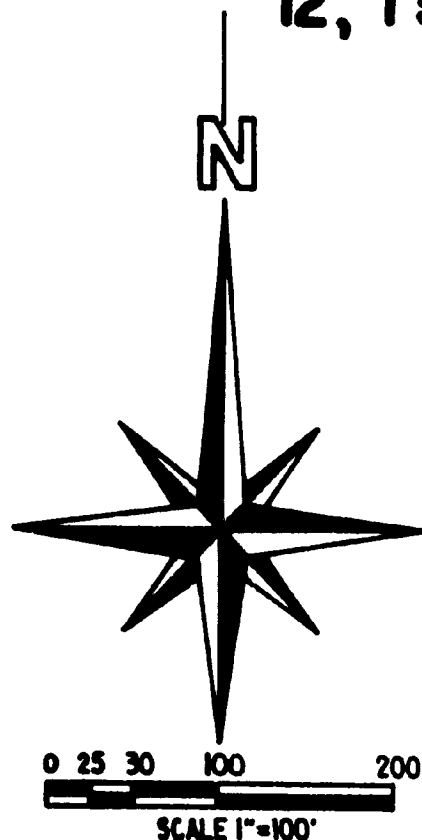


2-81

EAGLE'S NEST

A SUBDIVISION SITUATED IN THE NW 1/4 OF SECTION 13 AND THE SW 1/4 OF SECTION 12, T5S, R12W, FLOWERFIELD TOWNSHIP, ST. JOSEPH COUNTY, MICHIGAN



CURVE DATA				
CURVE	RADIUS	Δ	ARC LENGTH	CHD. BEARING DISTANCE
①	30'	90°	47.12'	N44°45'11\"E 42.43'
②	30'	90°	47.12'	N45°14'19\"W 42.43'

LEGEND

PLAT BEARINGS WERE ESTABLISHED BY THE SOUTH LINE OF SECTION 12 AS SHOWN ON THE PLAT OF PINEVIEW ESTATES RECORDED IN LIBER 5 ON PAGES 39 AND 39A.

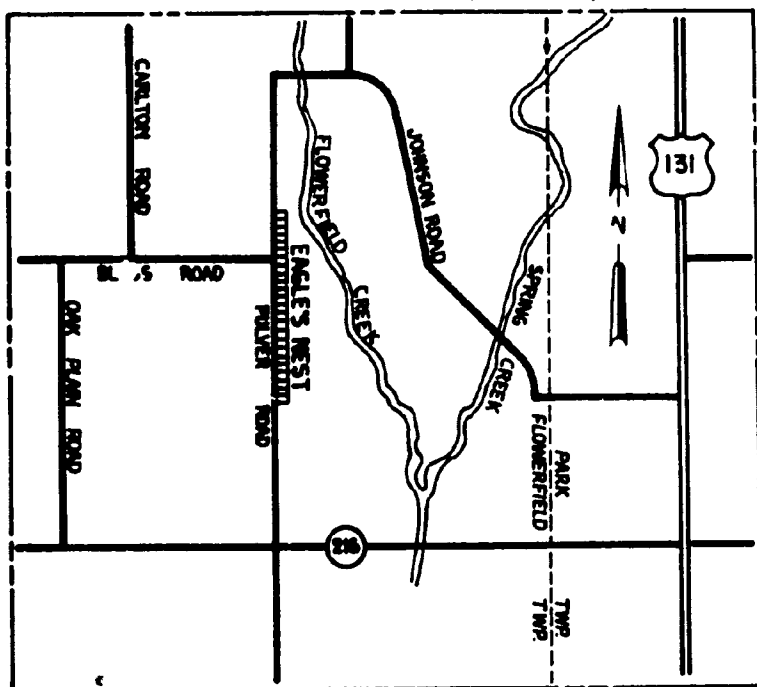
ALL DIMENSIONS ARE IN FEET.

ALL CURVE DIMENSIONS ARE ARC DIMENSIONS.

4" X 4" X 36" CONCRETE MONUMENTS ARE AT ALL POINTS MARKED THUS "O".

ALL LOT CORNERS ARE MARKED BY A 1/2" X 18" SOLID IRON BAR.

VICINITY MAP (NO SCALE)



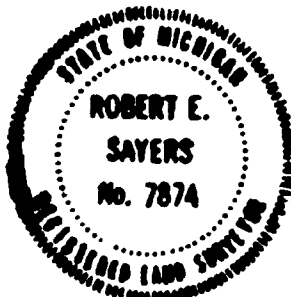
RESTRICTION CERTIFICATE

THIS PLAT IS SUBJECT TO RESTRICTIONS REQUIRED BY ACT 288 OF 1967, AS AMENDED ON CERTAIN LOTS WITH RESPECT TO THE REQUIREMENTS OF THE MICHIGAN DEPARTMENT OF NATURAL RESOURCES AND/OR THE MICHIGAN DEPARTMENT OF PUBLIC HEALTH, WHICH ARE RECORDED IN LIBER 402, PAGE 467 OF RECORDS OF THIS COUNTY.

EXAMINED AND APPROVED
Date June 16, 1976

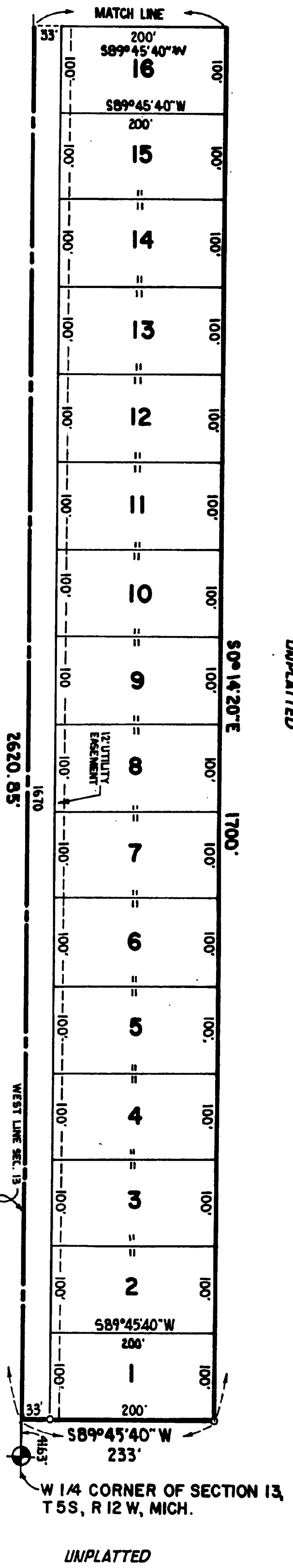
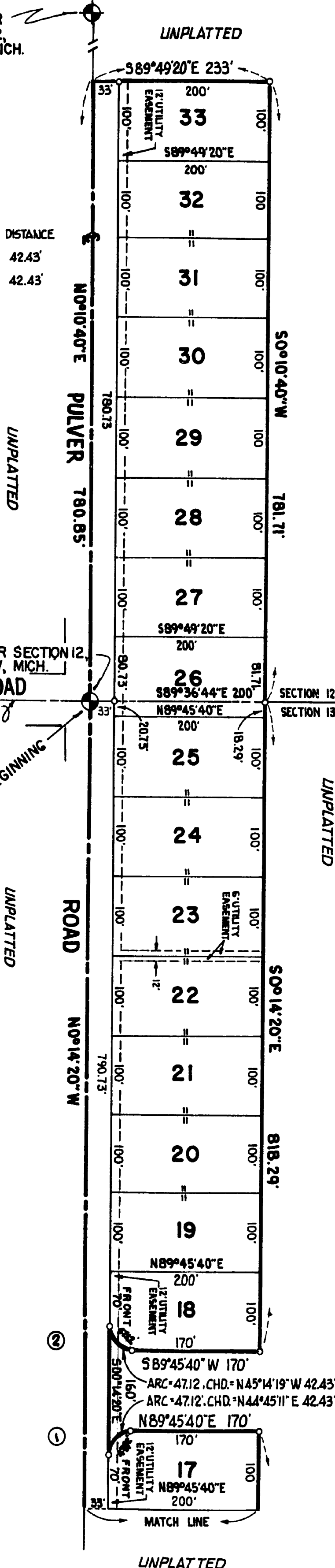
Allison Green
ALLISON GREEN
STATE TREASURER

Richard E. Lerner
Richard E. Lerner, Plat Examiner



W 1/4 CORNER OF SECTION 12, T5S, R12W, MICH.

UNPLATTED



Lib 5 of Plats page 96

EAGLE'S NEST

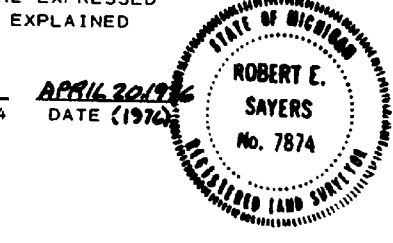
A SUBDIVISION SITUATED IN THE NW 1/4 OF SECTION 13 AND THE SW 1/4 OF SECTION 12, T 5S, R 12W, FLOWERFIELD TOWNSHIP, ST. JOSEPH COUNTY, MICHIGAN

SURVEYOR'S CERTIFICATE

I, ROBERT E. SAYERS, SURVEYOR, CERTIFY: THAT I HAVE SURVEYED, DIVIDED AND MAPPED THE LAND SHOWN ON THIS PLAT, DESCRIBED AS FOLLOWS: EAGLE'S NEST, A SUBDIVISION SITUATED IN THE NW 1/4 OF SECTION 13 AND THE SW 1/4 OF SECTION 12, T 5 S, R 12 W, FLOWERFIELD TOWNSHIP, ST. JOSEPH COUNTY, MICHIGAN DESCRIBED AS FOLLOWS: COMMENCING AT THE SW CORNER OF SAID SECTION 12 AND RUNNING THENCE N 0° 10' 40" E, ALONG THE WEST LINE OF SAID SECTION 12, FOR 780.85 FEET, THENCE S 89° 49' 20" E 233.00 FEET, THENCE S 0° 10' 40" W 781.71 FEET TO THE SOUTH LINE OF SAID SECTION 12, THENCE S 0° 14' 20" E PARALLEL WITH THE WEST LINE OF SAID SECTION 13, 818.28 FEET, THENCE S 89° 45' 40" W 170 FEET TO THE P.C. OF A 30 FOOT RADIUS CURVE TO THE RIGHT, THENCE NORTHWESTERLY ALONG SAID CURVE AN ARC DISTANCE OF 47.12 FEET (SAID CURVE HAVING AN I ANGLE OF 90° AND BEING SUBTENDED BY A CHORD BEARING N 45° 14' 19" W 42.43 FEET) TO THE EAST LINE OF PULVER ROAD, THENCE S 0° 14' 20" E ALONG SAID ROAD 160 FEET TO THE P.C. OF A 30 FOOT RADIUS CURVE TO THE RIGHT, THENCE NORTHEASTERLY ALONG SAID CURVE AN ARC DISTANCE OF 47.12 FEET (SAID CURVE HAVING AN I ANGLE OF 90° AND BEING SUBTENDED BY A CHORD BEARING N 44° 45' 11" E 42.43 FEET), THENCE N 89° 45' 40" E 170 FEET, THENCE S 0° 14' 20" E 1700.00 FEET, THENCE S 89° 45' 40" W 233.00 FEET TO THE WEST LINE OF SAID SECTION 13, THENCE N 0° 14' 20" W, ALONG SAID SECTION LINE, 2620.85 FEET TO THE POINT OF BEGINNING OF THIS DESCRIPTION. This subdivision contains 38 numbered lots.

THAT I HAVE MADE SUCH SURVEY, LAND-DIVISION AND PLAT BY THE DIRECTION OF THE OWNERS OF SUCH LAND. THAT SUCH PLAT IS A CORRECT REPRESENTATION OF ALL THE EXTERIOR BOUNDARIES OF THE LAND SURVEYED AND THE SUBDIVISION OF IT. THAT THE REQUIRED MONUMENTS AND LOT MARKERS HAVE BEEN LOCATED IN THE GROUND OR THAT SURETY HAS BEEN DEPOSITED WITH THE MUNICIPALITY, AS REQUIRED BY SECTION 125 OF THE ACT. THAT THE ACCURACY OF THE SURVEY IS WITHIN THE LIMITS REQUIRED BY SECTION 126 OF THE ACT. THAT THE BEARINGS SHOWN ON THE PLAT ARE EXPRESSED AS REQUIRED BY SECTION 126(3) OF THE ACT AND AS EXPLAINED IN THE LEGEND.

Robert E. Sayers
ROBERT E. SAYERS, REGISTERED LAND SURVEYOR #7874
P.O. BOX 212, STURGIS, MICHIGAN 49091



PROPRIETOR'S CERTIFICATE

WE, AS PROPRIETORS CERTIFY THAT WE CAUSED THE LAND EMBRACED IN THE ANNEXED PLAT TO BE SURVEYED, DIVIDED, MAPPED AND DEDICATED AS REPRESENTED ON THIS PLAT AND THAT THAT PORTION OF PULVER ROAD ~~embodied within this~~ PLAT IS HEREBY DEDICATED TO THE PUBLIC; THAT THE PUBLIC UTILITY EASEMENTS ARE PRIVATE EASEMENTS AND THAT ALL OTHER EASEMENTS ARE FOR THE USES SHOWN ON THE PLAT.

R.E. Sayers
R.E. SAYERS
WITNESS

Edward E. Powell, Jr.
EDWARD E. POWELL, JR.
RTE. 2, THREE RIVERS, MICHIGAN
49093

Nancy C. Fisher
NANCY C. FISHER
WITNESS

Diane L. Powell
DIANE L. POWELL
RTE. 2, THREE RIVERS, MICHIGAN
49093

ACKNOWLEDGEMENT

STATE OF MICHIGAN SS
COUNTY OF ST. JOSEPH
PERSONALLY CAME BEFORE ME THIS 21st DAY OF APRIL, 1976, THE ABOVE NAMED EDWARD E. POWELL, JR. AND DIANE L. POWELL, HIS WIFE, TO ME KNOWN TO BE THE PERSONS WHO EXECUTED THE FOREGOING INSTRUMENT AND ACKNOWLEDGED THAT THEY EXECUTED THE SAME AS THEIR FREE ACT AND DEED.

NOTARY PUBLIC *Nancy C. Fisher*, St. Joseph COUNTY, MICHIGAN
NANCY C. FISHER
MY COMMISSION EXPIRES: September 15, 1977

COUNTY TREASURER'S CERTIFICATE

THE RECORDS IN MY OFFICE SHOW NO UNPAID TAXES OR SPECIAL ASSESSMENTS FOR THE FIVE YEARS PRECEDING APRIL 21, 1976, INVOLVING THE LANDS INCLUDED IN THIS PLAT.

Stanley M. Huff
STANLEY M. HUFF, JR., JOSEPH COUNTY TREASURER

COUNTY DRAIN COMMISSIONER'S CERTIFICATE

APPROVED ON APRIL 27, 1976 AS COMPLYING WITH SECTION 192 OF ACT 288, P.A. 1967 AND THE APPLICABLE RULES AND REGULATIONS PUBLISHED BY MY OFFICE IN THE COUNTY OF ST. JOSEPH.

Lloyd S. Jupp
LLOYD S. JUPP, ST. JOSEPH COUNTY DRAIN COMMISSIONER

CERTIFICATE OF COUNTY ROAD COMMISSIONERS

APPROVED ON APRIL 29, 1976 AS COMPLYING WITH SECTION 183 OF ACT 288, P.A. 1967 AND THE APPLICABLE RULES AND REGULATIONS PUBLISHED BY THE BOARD OF ROAD COMMISSIONERS OF ST. JOSEPH COUNTY.

Frank Schellenbarger *Carl L. Roberts* *D.W. Arney*
FRANK SHELLENBARGER CARL L. ROBERTS D.W. ARNEY
Chairman Member Member

CERTIFICATE OF MUNICIPAL APPROVAL

I CERTIFY THAT THIS PLAT WAS APPROVED BY THE TOWNSHIP BOARD OF THE TOWNSHIP OF FLOWERFIELD, AT A MEETING HELD MAY 6, 1976 AND WAS REVIEWED AND FOUND TO BE IN COMPLIANCE WITH ACT 288, P.A. 1967. THIS PLAT WAS APPROVED BY THE ST. JOSEPH COUNTY HEALTH DEPARTMENT ON APRIL 26, 1976.

Doris J. Curtis
DORIS J. CURTIS, TOWNSHIP CLERK

COUNTY PLAT BOARD CERTIFICATE

THIS PLAT HAS BEEN REVIEWED AND IS APPROVED BY THE ST. JOSEPH COUNTY PLAT BOARD ON MAY 1, 1976 AS BEING IN COMPLIANCE WITH ALL OF THE PROVISIONS OF ACT 288, P.A. 1967, AND THE PLAT BOARD'S APPLICABLE RULES AND REGULATIONS.

Donna E. Donmyer *Beverly J. Burnham* *Stanley M. Huff*
DONNA E. DONMYER BEVERLY J. BURNHAM STANLEY M. HUFF
REGISTER OF DEEDS COUNTY CLERK COUNTY TREASURER

REGISTER OF DEEDS OFFICE SS

COUNTY OF ST. JOSEPH
THE PLAT OF *Eagle's Nest* WAS RECORDED THIS 18th DAY OF *June*, 1976 AT *11:15* O'CLOCK A. M. IN LIBER *467* OF PLATS ON PAGES *96 & 97*.

Donna E. Donmyer
DONNA E. DONMYER
REGISTER OF DEEDS

RESTRICTION CERTIFICATE

THIS PLAT IS SUBJECT TO RESTRICTIONS REQUIRED BY ACT 288 OF 1967, AS AMENDED ON CERTAIN LOTS WITH RESPECT TO THE REQUIREMENTS OF THE MICHIGAN DEPARTMENT OF NATURAL RESOURCES AND/OR THE MICHIGAN DEPARTMENT OF PUBLIC HEALTH, WHICH ARE RECORDED IN LIBER *402*, PAGE *467* OF RECORDS OF THIS COUNTY.

See Amendment & Restrictions - Liber 409 pg. 314

Liber 5 of Plats Page 27