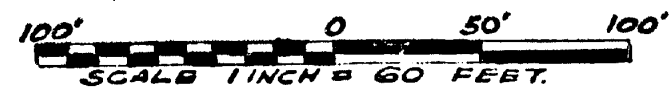
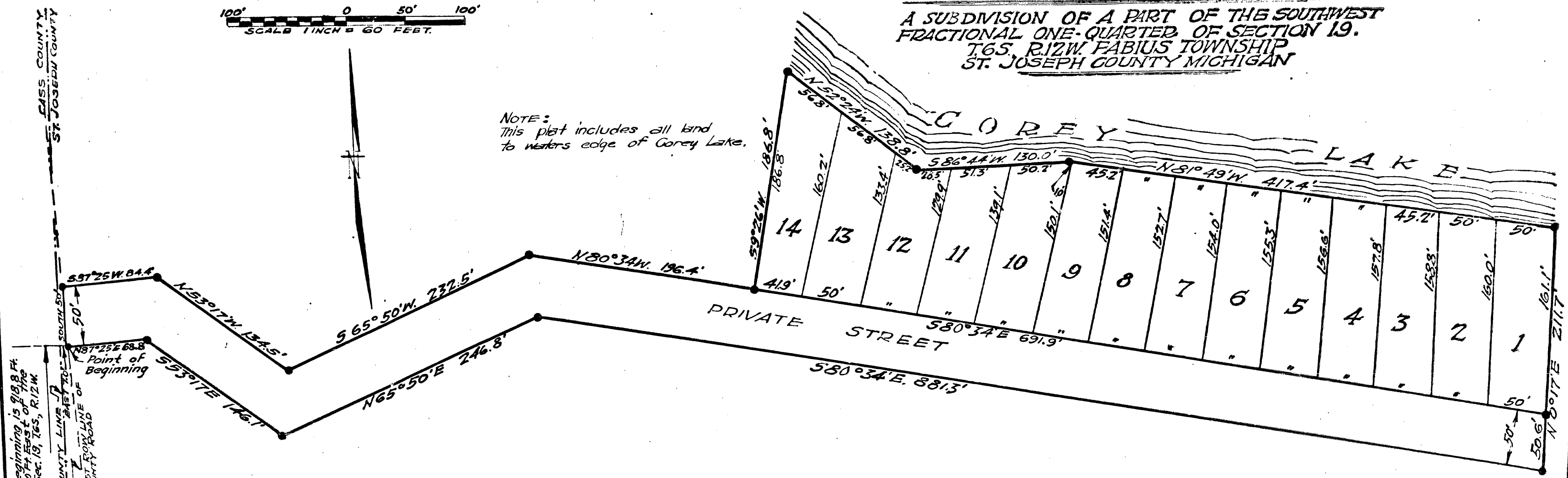


# SYCAMORE SHORES

A SUBDIVISION OF A PART OF THE SOUTHWEST  
FRACTIONAL ONE-QUARTER OF SECTION 19,  
T.6S., R.12W. FABIUS TOWNSHIP  
ST. JOSEPH COUNTY MICHIGAN



NOTE:  
This plat includes all land  
to waters edge of Corey Lake.



Point of Beginning is 918.8 Ft. North and 70 Ft. East of the S.W. Corner Sec. 19, T.6S., R.12W.

### DEDICATION

KNOW ALL MEN BY THESE PRESENTS THAT WE L. ELMER PULVER, as proprietor, and GARRIE E. PULVER, his wife have caused the land embraced in the annexed plat to be surveyed, laid out and platted, to be known as SYCAMORE SHORES A subdivision of a part of the Southwest fractional one-quarter of section 19 T.6S., R.12W., Fabius Township, St. Joseph County, Michigan, and that the streets as shown on said plat are hereby dedicated to the use of the lot owners.

Signed and Sealed in Presence of  
Harriett E. Galkins HARRIETT E. GALKINS  
Eva M. Brumbaugh EVA M. BRUMBAUGH  
L. Elmer Pulver (L.S.) L. ELMER PULVER  
Carrie E. Pulver (L.S.) GARRIE E. PULVER

STATE OF MICHIGAN  
County of St. Joseph.

On this 22<sup>nd</sup> day of Sept 1941, before me a Notary Public in and for said county, personally came the above named L. Elmer Pulver, and Carrie E. Pulver, his wife, known to me to be the persons who executed the above dedication, and acknowledged the same to be their free act and deed.

My Commission Expires Aug. 4<sup>th</sup> 1943 Notary Public St. Joseph County, Mich.  
Fenner Ball FENNER BALL

### DESCRIPTION OF LAND PLATTED

The land embraced in the annexed plat of Sycamore Shores a subdivision of a part of the southwest fractional one-quarter of section 19, T.6S., R.12W., Fabius Township, St. Joseph County, Michigan, is described as follows: Beginning at a point 918.8 feet North and 70 feet East of the Southwest Corner of said section 19, thence N. 87° 25' E. 68.8 Ft.; thence S 53° 17' E. 146.1 Ft.; thence N. 65° 50' E. 246.8 Ft.; thence S 80° 34' E. 881.3 Ft.; thence N 0° 17' E. 211.7 Ft.; thence N 81° 49' W. 417.4 Ft.; thence S 86° 44' W. 130.0 Ft.; thence N 52° 24' W. 138.8 Ft.; thence S 9° 26' W. 186.8 Ft.; thence N 80° 34' W. 196.4 Ft.; thence S 65° 50' W. 232.5 Ft.; thence N 53° 17' W. 134.5 Ft.; thence S 87° 25' W. 84.4 Ft.; thence South 500 Ft. to the point of beginning.

### SURVEYORS CERTIFICATE

I hereby certify that the plat hereon delineated is a correct one and that permanent metal monuments consisting of bars not less than one-half inch in diameter and 48 inches in length, encased in a concrete cylinder at least 4 inches in diameter and 48 inches in depth have been placed at points marked thus (•) as thereon shown at all angles in the boundaries of the land platted, at all the intersections of streets and at the intersections of streets with the boundaries of the plat as shown on said plat.

Earl N. James  
EARL N. JAMES REGISTERED LAND SURVEYOR

NOTE:  
All measurements are in feet and decimals thereof.  
This plat includes all land to waters edge of Corey Lake.  
The County Line has been used as the Meridian for this survey.

CERTIFICATE OF APPROVAL BY BOARD OF COUNTY ROAD COMMISSIONERS  
 This plat has been examined and was approved on the 23<sup>rd</sup> day of September 1941 by the St. Joseph County Board of Road Commissioners.

Joseph H. Ruggles CHAIRMAN  
Roy G. Stearns MEMBER  
Arthur L. Hibbard MEMBER

CERTIFICATE OF MUNICIPAL APPROVAL  
 This plat was approved by the Township Board of the Township of Fabius at a meeting held Oct 3 - 1941.

Leslie Krull CLERK

CERTIFICATE OF APPROVAL BY COUNTY BOARD  
 This plat was approved on the 4<sup>th</sup> day of October 1941, by the St. Joseph County Board.

Edward H. Andrews DEPUTY COUNTY TREASURER  
John W. Marvin COUNTY CLERK  
Fenner Ball DEPUTY COUNTY TREASURER

COUNTY TREASURER'S CERTIFICATE RELATING TO TAXES  
 Office of County Treasurer, St. Joseph County.  
 I hereby certify that there are NO tax liens or titles held by the STATE on the lands described hereon, and that there are NO tax liens or titles held by individuals on said lands, for the five years preceding the 22<sup>nd</sup> day of SEPT. 1941 and that the taxes for said period of five years are — paid as shown by the records of this office.  
 This certificate does not apply to taxes, if any, now in process of collection by township collecting officers.

Fenner Ball DEPUTY COUNTY TREASURER

COPY  
 Register's Office  
 St. Joseph County, Mich.  
 Plat of Sycamore Shores,  
 Fabius Township  
 was Recorded this 12 day of  
 October, A.D. 1941 at 10 o'clock  
 P.M. in Lib. 2 of Plat  
 on Page 70  
Harriett E. Galkins  
 Register of Deeds

THESEY CERTIFY THAT THIS COPY IS  
 A TRUE COPY OF THE P.P. OR PLAT  
 FORWARDED THE REGISTER OF DEEDS  
 FOR RECORDING.  
 COMPARED October 25, 1941  
Mayme Jewell Purdy DEPUTY AUDITOR GENERAL  
 Examined and Approved  
 October 15, 1941  
Mayme Jewell Purdy Deputy Auditor General

FILED IN AUDITOR GENERAL'S DEPT.  
 October 23, 1941  
Mayme Jewell Purdy DEPUTY AUDITOR GENERAL

28315